

DIRECTIONS FOR FBMP SITE AT:

CORNWALL SWAMP WMA

CORNWALL, VT

NOTE: Bearings are True North (magnetic +15°)

To reach Cornwall Swamp, take Swamp Road – the dirt road that connects West Salisbury/Salisbury Station with Route 30. Park along the road just west of the wooded swamp, where it interfaces with open fields. Walk east along this road about 200 meters into the swamp and look for flagging on both sides of the road, marking the intersection of the census line and the road (if you have a GPS, you can use the coordinates below to find road flagging and/or census points).

From here follow a compass bearing of **210°** and flagging every 25 meters or so for 400 m. At ~200 m you will pass station #2, and 220 m beyond that you will reach listening station #1, about 400 m south of the road. **Point 1** is on an **8” dbh red maple** triply flagged in red with “VINS CS #1” and a metal tree tag inscribed with “VINS CS #1.”

POINT 2 – From Point 1 follow a **30°** bearing 200 m back to station #2 on a **6” dbh red maple**.

POINT 3 – Continue on the **30°** bearing back out to the road. From here, shift compass bearing to **40°**, and follow it ~100 m north of the road to station #3 on a **6” dbh white birch**.

POINT 4 – Change to a **35°** bearing for another 200 m to station #4 on a **5” dbh cedar**.

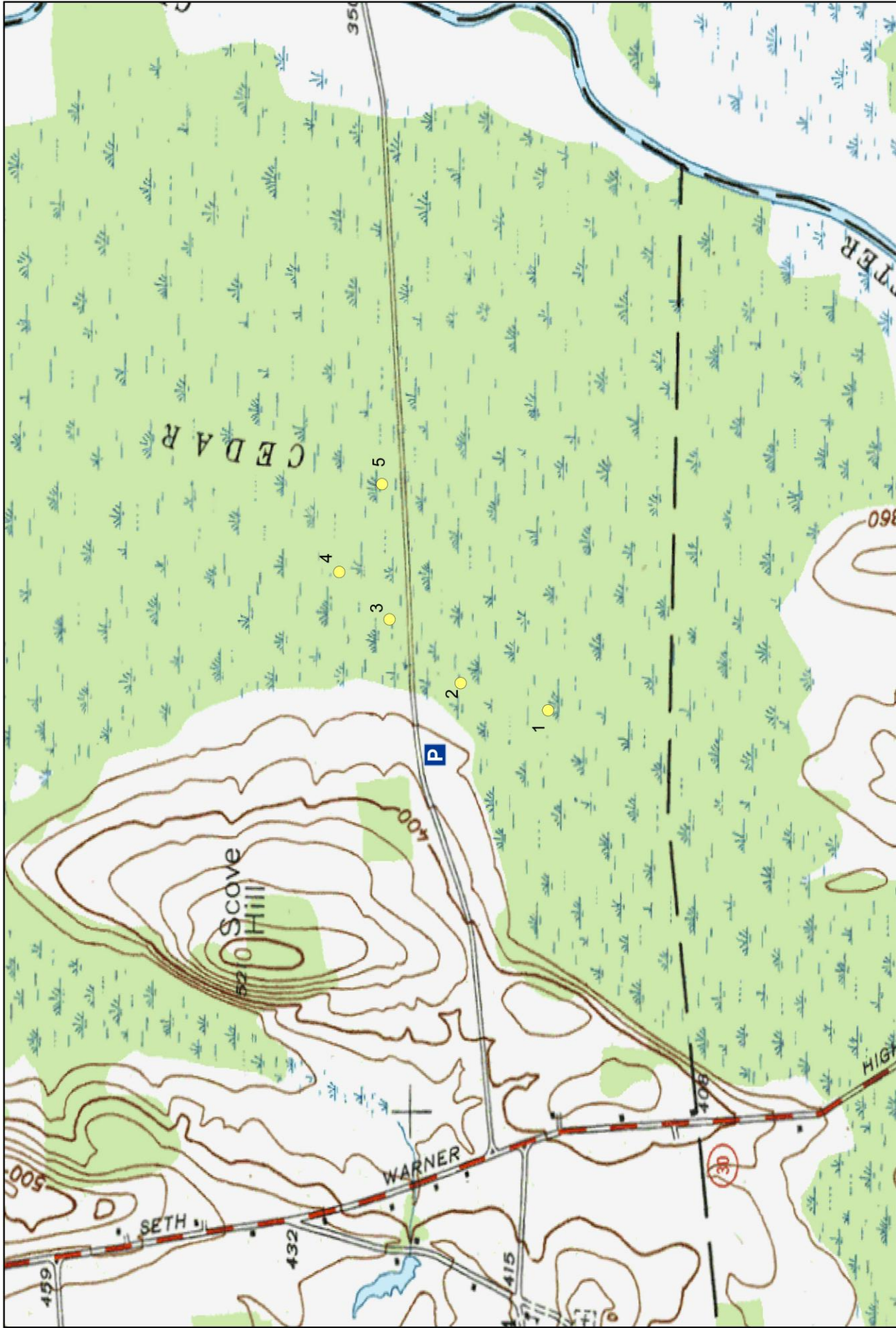
POINT 5 – Bend here to **125°** and follow it for another 250 m to station #5 on a **7” dbh ash**.

You can walk due south from Point 5 to the road.

Point Count Coordinates for Cornwall Swamp

POINT	IDENT	LAT	LONG
Road Flagging	CS00	43.91664505	-73.19386848
Point 1	CS01A	43.91332984	-73.19630393
Point 2	CS02A	43.91520202	-73.19494673
Point 3	CS03A	43.91734779	-73.19303163
Point 4	CS04A	43.91886055	-73.19161006
Point 5	CS05A	43.91757309	-73.18896004

NOTE: Surrounding each point count station are 3 vegetation plots (15 in total) also marked with tree tags and blue flagging. The veg points are 30 m away from each point count on compass bearings of 120 °, 240 °, and 360 °. Their labels follow the point count labeling system with the letters B, C, and D indicating the bearing (e.g. Point 1 veg plots are labeled “VINS TC #1B, 1C, and 1D respectively).



Forest Bird Monitoring Program - Cornwall Swamp