

Directions to FBMP Site at

Breadloaf Wilderness Area, Green Mountain National Forest

Granville, Vermont

Site established 28 April, 2004 by Steve Faccio and Charlie LaRosa

NOTE: All bearings are True North (magnetic north +15°), if your compass is not adjusted for declination, add 15° to the bearings indicated.

All listening stations are marked with blue flagging and an aluminum treetag, labeled "VINS BL".

Turn west off Route 100 onto FR 25 at the Warren/Granville town line and drive 0.10 miles to trailhead parking area on left just before gate. Park here and walk up FR 25 about 250m. Around the first bend, watch for blue flagging on maple sapling on left (south) side of road, labeled "VINS BL Start."

POINT 1 – From the starting point, follow an old logging road on a bearing of ~190° for ~200 m to Point 1, located on a **6" dbh Sugar Maple** in a Maple-Beech stand near a large (18" dbh) Hemlock.

POINT 2 – To reach Point 2, change bearings to 122° and follow it for 180 m. You will transition into a younger Maple-Yellow Birch-Beech stand as you approach Point 2, located about on a **6" dbh White Ash** among some Mountain Maples.

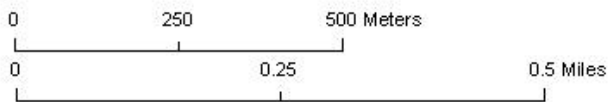
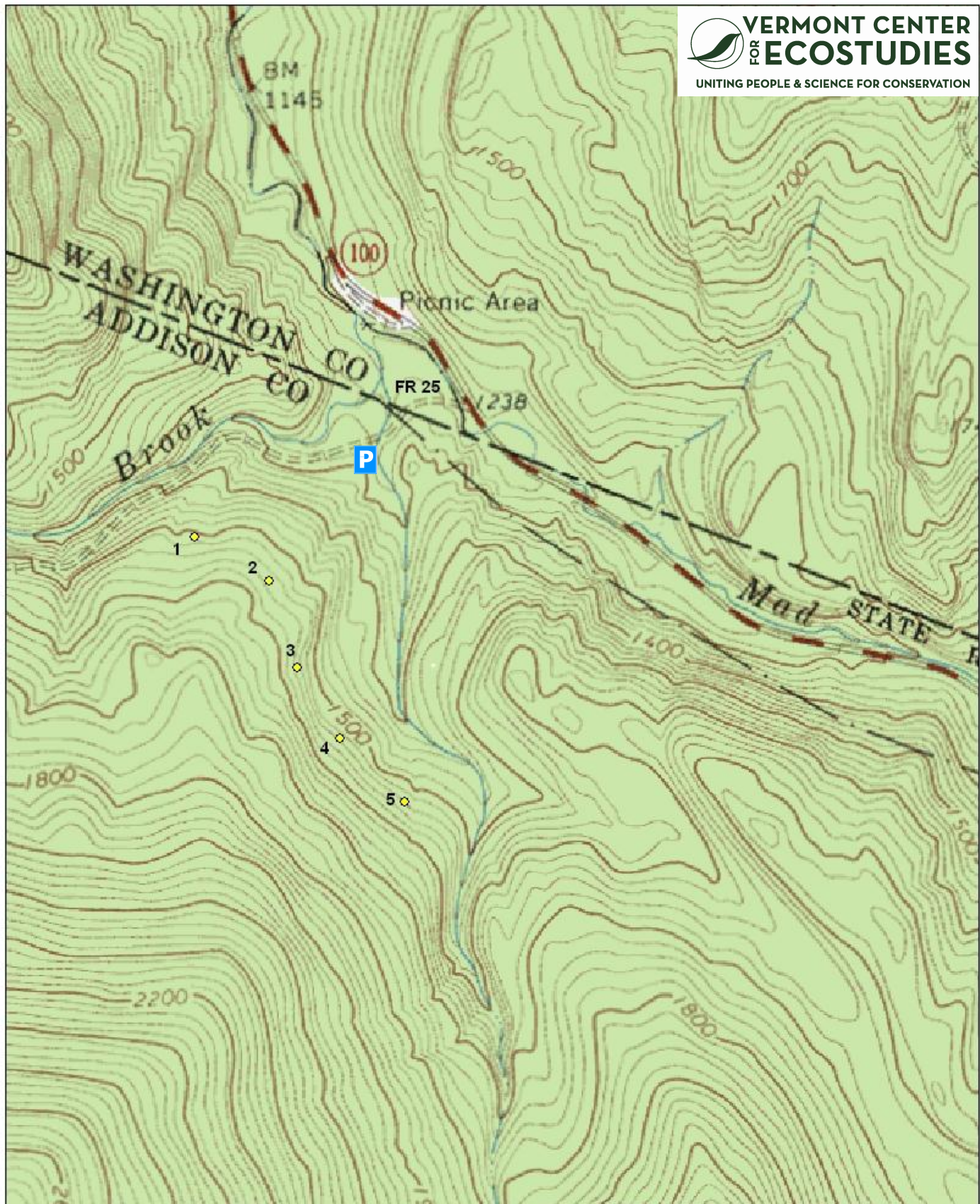
POINT 3 – Change bearings to 160° and follow it for ~180 m. Point 3 is located on a **6" Yellow Birch** in a rocky, SE-facing bowl, near a lone 8" Red Spruce.

POINT 4 – Again, change bearings to 150° and follow it for 180 m to Point 4, located on a **5" dbh Sugar Maple** on a rocky, E-facing slope.

POINT 5 – Shift bearings to 133° for 190 m to reach Point 5, located on an **8" Sugar Maple** next to a large, rectangular boulder in a mature Sugar Maple stand.

From Point 5, head straight downslope to the trail following the stream.

Point Count Coordinates (Decimal Degrees, NAD 83)		
POINT COUNT	LONGITUDE	LATITUDE
BL1	-72.8598131	44.0592801
BL2	-72.8577474	44.0584294
BL3	-72.8570640	44.0568027
BL4	-72.8558274	44.0554349
BL5	-72.8540767	44.0542116



Breadloaf Wilderness FBMP Site

 Point Count

