

DIRECTIONS TO FBMP SITE AT:

LITTLE ASCUTNEY WILDLIFE MANAGEMENT AREA

WEATHERSFIELD, VT

Site Established: 5/15/98 by Steve Faccio (updated 6/02)

From Route 106 turn east onto Ascutney Basin Rd. about 1.5 miles south of Felchville. Continue about ¾ mile to the entrance to the Little Ascutney WMA on the right. Drive past the lower parking lot (the gate is open after mud season) and up the hill to where it levels out. Park in the lot on the right just before the closed gate.

NOTE: This site has a maze of old skid trails, so pay attention to the directions.

Point 1: Walk past the gate and turn right onto a skid road. Follow this trail across the stream and continue along the main trail about 200m up a hill as it curves around the base of a small peak on your right. When the trail begins to level off, start looking for an 8" dbh white birch on the left side of the trail. There is a small (3") maple flagged with blue next to the birch, and a tree tag on the back side of the birch with "VINS LA #1" written on it.

Point 2: To reach point 2 continue on the main trail about 200 m. Shortly after you pass a low, wet/muddy spot, several trails fork off and there is a large beech tree on the right side with red paint on the trunk. Take the left fork for about 20m until you reach 2 stumps on the left side of the trail. Point 2 is on a 3" beech 3 m out from the stumps, flagged in blue and marked with a tree tag.

Point 3: Continue on this same trail for about 200 m. When the trail splits take the left fork a short way. Just before crossing a stream, by the large hemlock, take a bearing of 300° and pace about 30 m. Point 3 is on a 4" sugar maple, flagged in blue and marked with a tree tag.

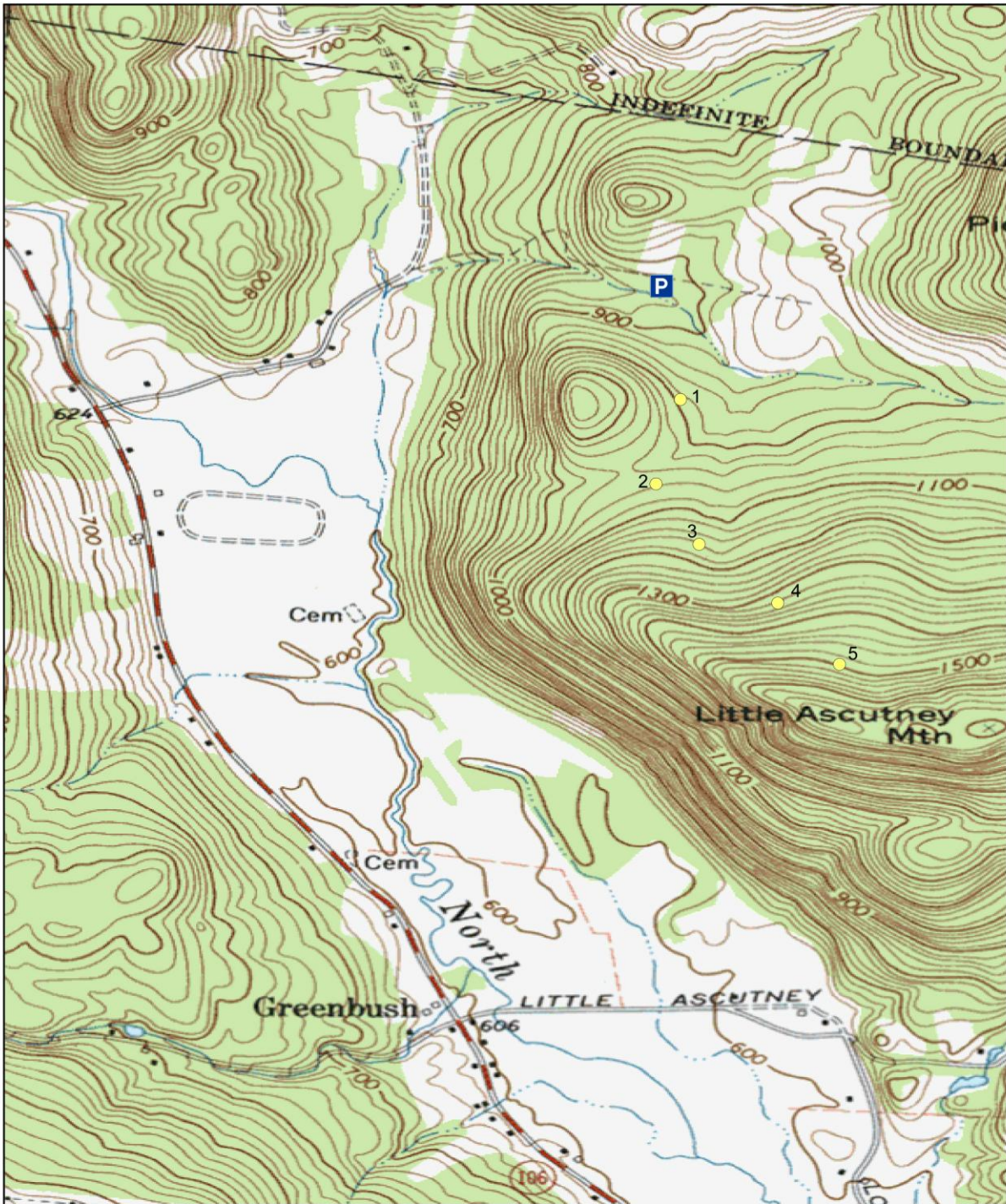
Point 4: Go back to the trail, cross the stream, and follow for about 200 m to a large (40") yellow birch on the left side of trail. Point 4 is on a 4" sugar maple next to the birch.

Point 5: Continue up trail. After about 100m, take right fork (blue flag on striped maple), and continue for another 100m, taking the next fork to the right also. About 30m after crossing an area with lots of downed limbs and slash on the trail, look for the point on the left about 10m off the trail on a 4" striped maple.

Point Count Coordinates (Decimal Degrees)

Point Count	LAT	LONG
1	43.43382061	-72.51209387
2	43.43155146	-72.51274833
3	43.42992604	-72.51158961
4	43.42834353	-72.50947603
5	43.42670202	-72.50781843

NOTE: Surrounding each point count station are three vegetation plots, each located 30 m away on **magnetic** bearings of 0°, 120°, and 240°. They are labeled with treetags inscribed with the point count number and a letter corresponding to the bearing: B (0°), C (120°), and D (240°). Be careful not to confuse these points with the actual point count stations.



500 250 0 500 Meters

Forest Bird Monitoring Program - Little Ascutney WMA



● Point Counts

