

Directions for FBMP Site at:

MOOSE BOG – WENLOCK/WEST MOUNTAIN WMAs

FERDINAND, VT

To reach the census plot, drive east on Rt. 105 from Island Pond. After about 7 miles you will cross railroad tracks and enter the Wenlock Wildlife Management Area, marked by a wooden sign on the south side of the road. A mile further, pull into the parking area at South America Pond Rd on the right. Walk down the road about 275 m watching carefully on the left (east) side of the road for a balsam fir sapling marked with double flagging, reading “VINS MB START.”

Point 1 – From this point, take a compass bearing of **160°** and follow flagging every 50 m or so to the first listening station, 100m from the start. This station is on a **5” dbh spruce** marked with flagging reading “VINS MB #1 0m” and a metal tree tag inscribed with “VINS MB #1.”

Point 2 – Change your compass bearing slightly to **170°** and continue for 200 m to station #2 on a **9” dbh fir**.

Point 3 – To reach the next point, shift back to **160°** and continue on for 200 m to station #3 on an **8” dbh fir**.

Point 4 – Change compass bearings again to **130°** and follow it 250 m to station #4 on a **9” dbh fir**, just after crossing the Buxton Road between two small camps.

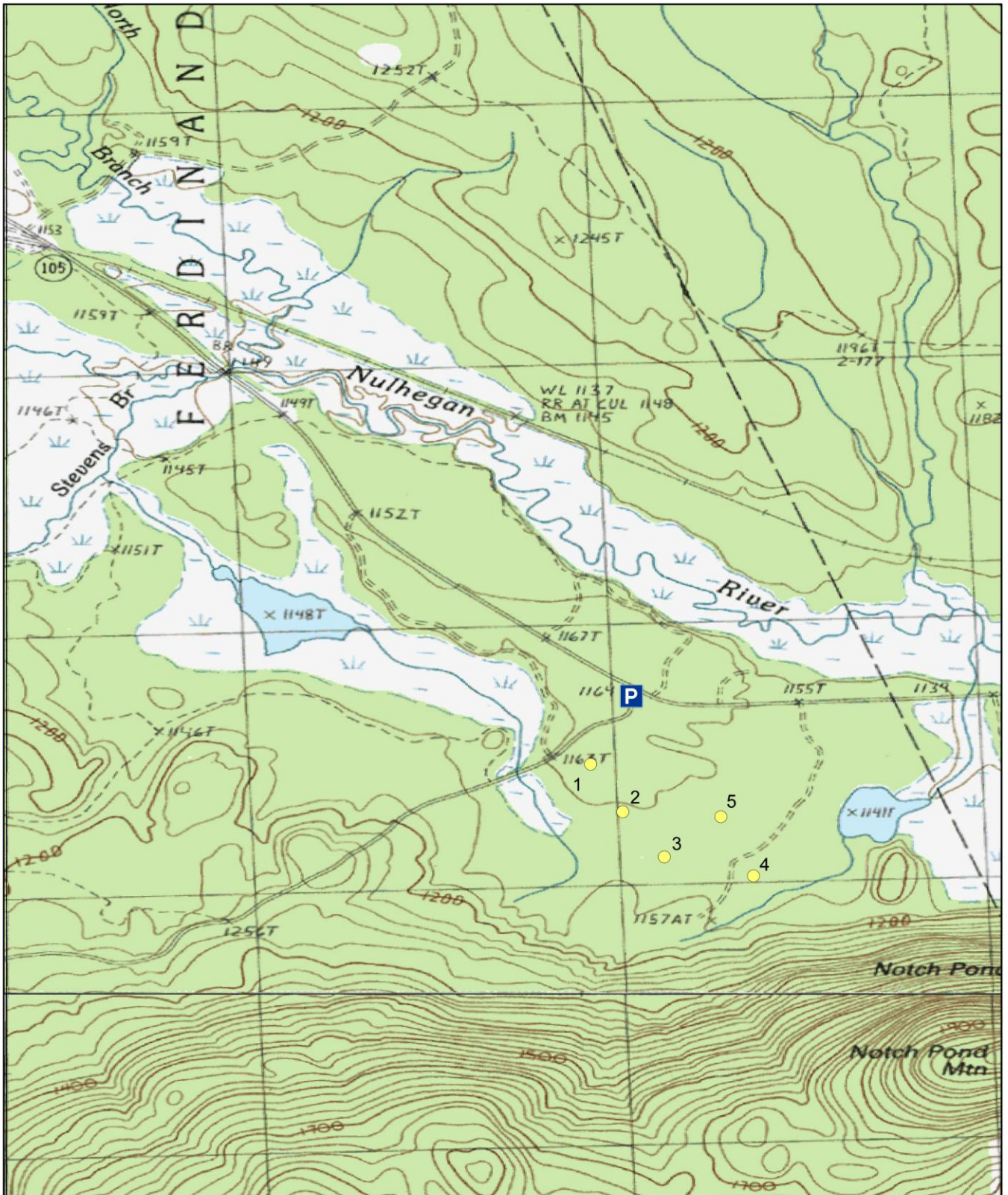
Point 5 – From this point shift to **0°** and continue following the orange flagging for 200 m. After 100 m you will reach a red cabin with the deer antlers above the door and the blue picnic table in the yard. The final listening station is 100 m beyond this camp.

To get back quickly to Rt. 105 and your car, follow the road by the red cabin north (left if you backtrack along the line) until its entrance beyond another orange metal gate onto Rt. 105.

NOTE: Three veg plots surround each point count station, each located 30 m away on magnetic bearings of 0°, 120°, and 240°. Their treetags are labeled with VINS MB VEG # X B (0°), C (120°), and D (240°). Be careful not to confuse these points with the actual point count stations.

Point Count Coordinates (Decimal Degrees)

Point Count	LAT	LONG
1	44.75797892	-71.72938236
2	44.75634277	-71.72827193
3	44.75478172	-71.72683963
4	44.75412190	-71.72377118
5	44.75617647	-71.72489234



500 250 0 500 Meters



Forest Bird Monitoring Program - Moose Bog

● Point Counts

