
**Directions to FBMP Site at
North Branch River Park
Montpelier, VT**

Site established 12 June, 2008 by Steve Faccio, Chip Darmstadt, and Cloe

*NOTE: All bearings are **true north**, if your compass is **not** adjusted for declination, add 15° to the bearings indicated. All listening stations are marked with blue flagging and an aluminum treetag, labeled "VCE NB".*

POINT 1 – From the NBNC, cross the foot bridge over the river and head south along the trail for about 700 meters. Just before reaching the trail that takes you across the river to the town recreation area, turn left onto trail, heading uphill. About 75m beyond the second hairpin turn, look for a small piece of blue flagging on left side of trail just before reaching a small drainage. Point 1 is 20m downhill from trail on a **6" dbh White Ash**.

POINT 2 – Return to the trail and continue north, crossing 2 streams, and bear left at the fork. Just before the third stream, head down-slope parallel to the stream for 50m to Point 2, located on a **6" Red Maple**.

POINT 3 – Return to the trail and continue north, bear right at the intersection and cross a bridge. Continue about 40m to another small stream. Just beyond stream, follow bearing of **275°** for 50m down-slope to Point 3 located on a **5" Red Maple 15m north of stream**.

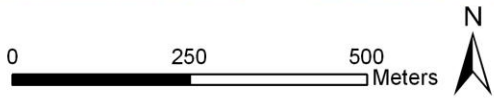
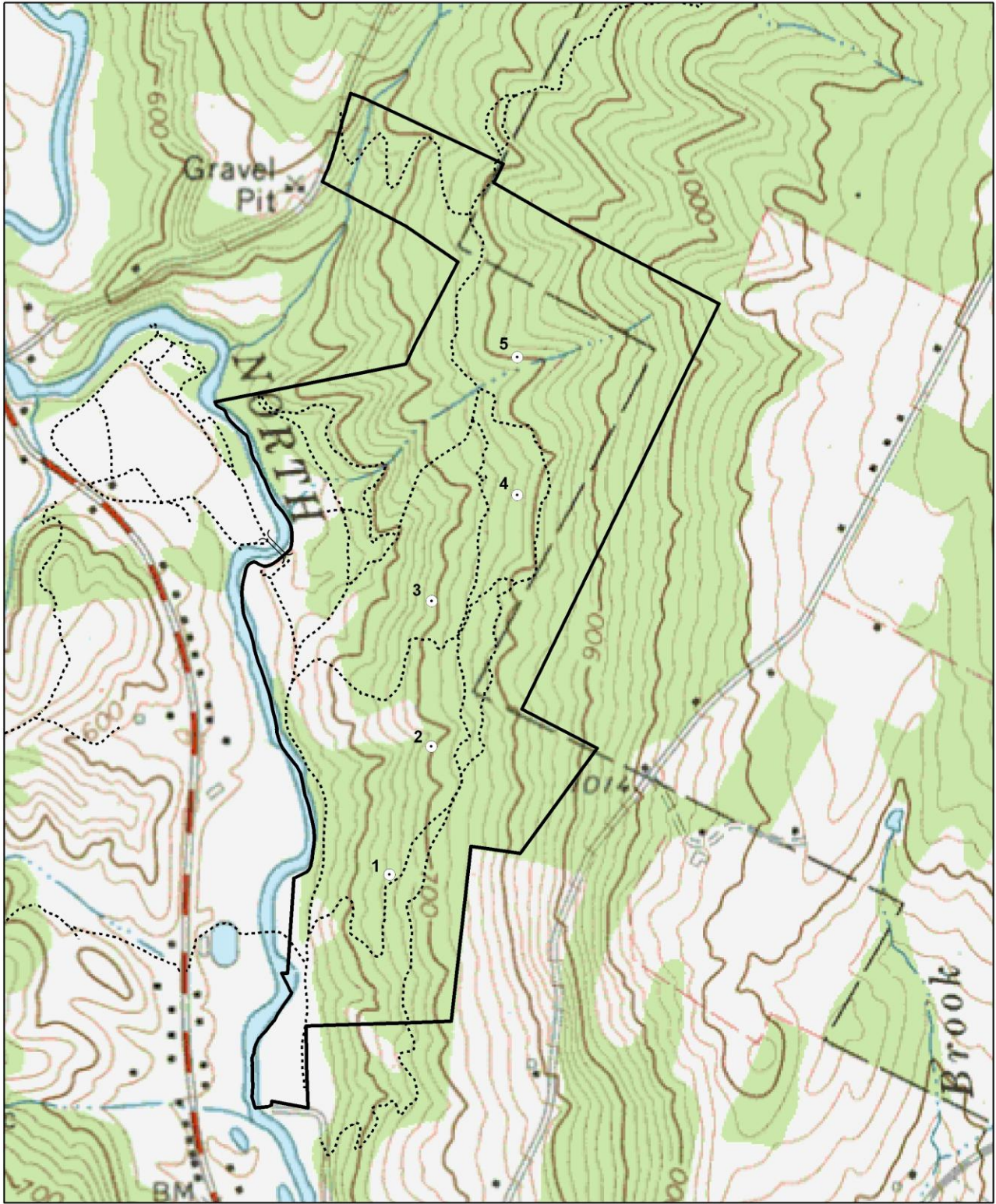
POINT 4 – Return to the trail and continue north about 150m. Just before arriving at double bridges, follow bearing of 100° for 50m upslope to Point 4 on a **4" hemlock**.

POINT 5 – Return to the trail and continue north, bearing right at the first intersection. Then take an immediate right onto trail marked with a "No Snowmobiles" sign. Go up trail about 40m to first hairpin turn with sugar maple with large burl on left side of trail. Follow a bearing of **36°** for 65m across stream to Point 5 on **4" American Beech** next to triple-trunked Yellow Birch about 25m upslope from stream.

To return to the Nature Center, backtrack along your last bearing to the trail and follow the main trail downhill to the fields.

Point Count Coordinates (Decimal Degrees)

Point	LAT	LONG
1	44.278258	-72.568651
2	44.280346	-72.567699
3	44.282718	-72.567699
4	44.284451	-72.565755
5	44.286704	-72.565755



FBMP Site at North Branch Park
Montpelier, VT