

DIRECTIONS TO FBMP SITE AT BANCROFT WOODS

LINCOLN & BRISTOL, VT

Site Established By: Steve Faccio, Warren King, and Lester Anderson, 6/5/98.

From Lincoln Center, go north on Quaker St. about 2.5 miles and turn left onto Guthrie Rd.. After 0.5 miles the road will fork, with the right fork leading to a house and the left fork degrading into a jeep trail and descending downhill. Park here, or if your vehicle has high clearance, proceed down the left fork another 50m to a gated field on the west. From the pole barn here, take a compass bearing of 310° and proceed across the field, passing a small “island” of woods on your left, to a trail entrance at the west edge of the hayfield. All the points are located along this trail and are marked with orange flagging tape and an aluminum tree tag on the north side of the trail.

POINT 1 – From the field edge, follow the trail through a mixed forest of white pine, aspen, and hardwoods for approximately 180 m. Shortly (20m) after transitioning into a more typical northern hardwood forest, look for point 1, marked with a tree tag (“VINS BA #1”), on a 6” dbh red maple on the right (north) side of the trail.

POINT 2 – Continue down the trail for approximately 200 m to a trio of medium-sized (6-10” dbh) white birches on the right side of the trail.

POINT 3 – Proceed for another 200 m to a 6” dbh sugar maple next to a large (12”) sugar maple, both on the right side of the trail.

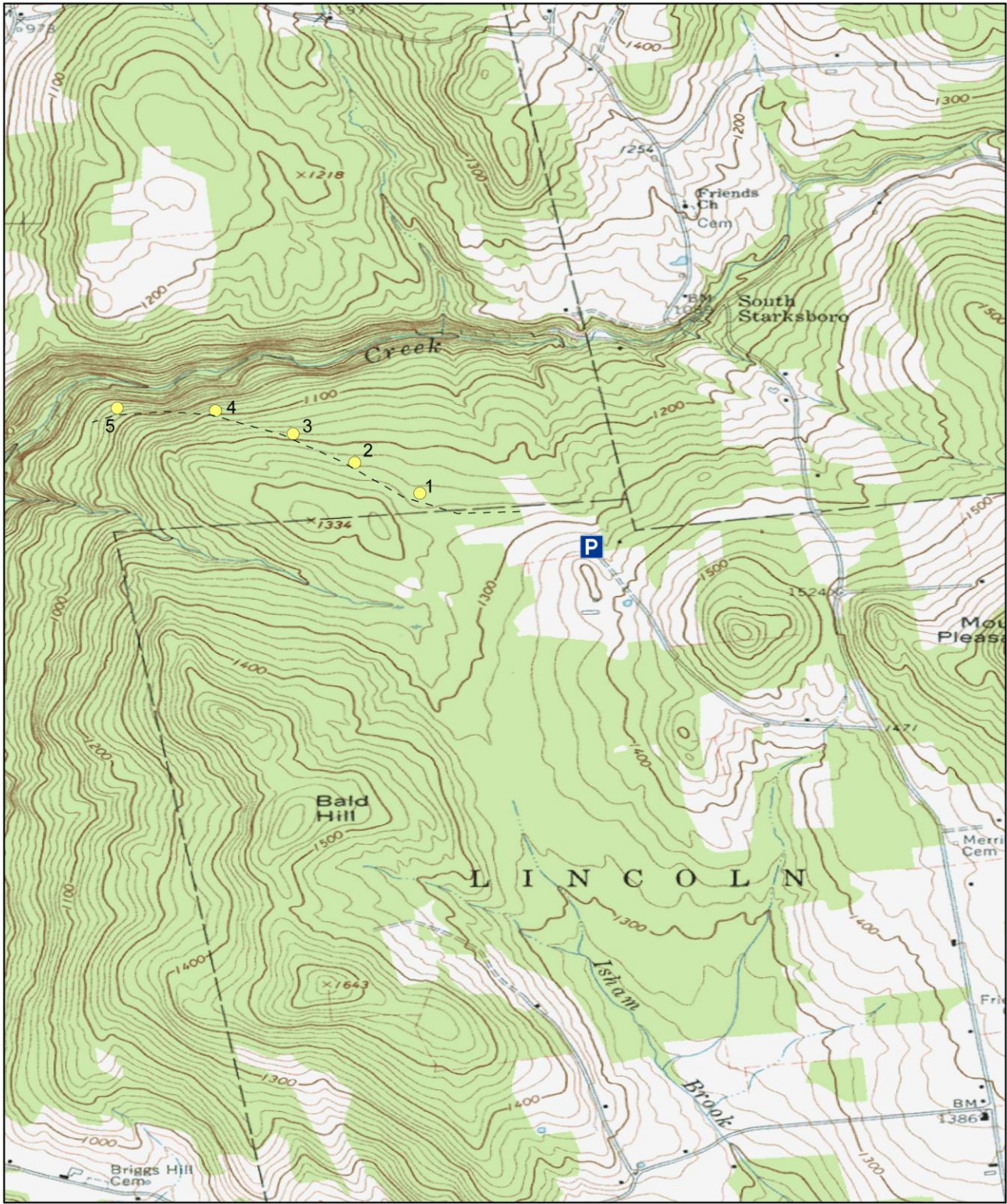
POINT 4 – Again, proceed for approximately 200 m. Shortly after crossing a seasonal stream bed, look for point 4 on an 8” dbh sugar maple next to a 12” hemlock on the right side of the trail.

POINT 5 – Proceed about 250 m to a 6” dbh sugar maple on the right side of the trail. This is about 75m *before* reaching the western property line which is marked with blue and orange blazes and where the trail becomes obscure.

Point Count Coordinates (Decimal Degrees)

Point	LAT	LONG
1	44.15578544	-73.02510926
2	44.15701926	-73.02775391
3	44.15819943	-73.03024837
4	44.15912211	-73.03339728
5	44.15923476	-73.03738841

*NOTE: Surrounding each point count station are three vegetation plots, each located 30 m away on **magnetic** bearings of 0°, 120°, and 240°. They are labeled with treetags inscribed with the point count number and a letter corresponding to the bearing: B (0°), C (120°), and D (240°). Be careful not to confuse these points with the actual point count stations.*



500 250 0 500 Meters



Forest Bird Monitoring Program - Bancroft Woods (Anderson Farm)



● Point Counts

