

Mountain Birdwatch 2.0

Route 132: Saddleback Mountain East, NY

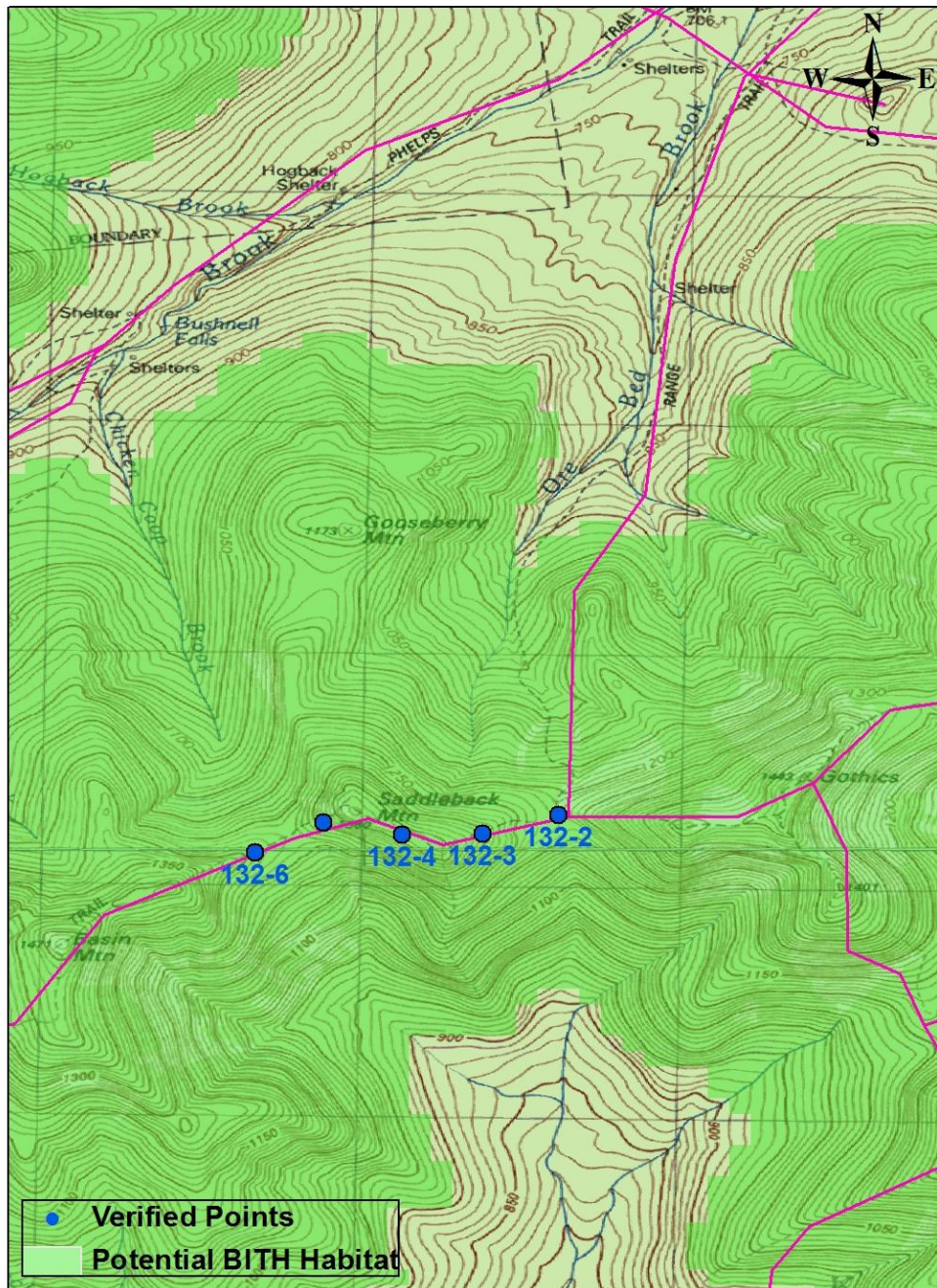
Hike Duration/Difficulty: 3.5-4 hours; 6.2 miles. Parking at the Garden in Keene Valley is \$7 per day. Access trails are easy to Interior Outpost (3.1 mi) then moderate to strenuous for the last 3.1 miles to the col. Survey route is strenuous.

Route/Trail Access: Take the Phelps trail from the Garden parking lot 3.1 miles to the DEC Interior Outpost, cross the suspension bridge across John's Brook, then take the Orebed Brook Trail to the Gothics/Saddleback col (another 3.1 miles).







NOTE: POINTS 5 and 6 ARE DISCONTINUED AS OF 2013!

Revised 11/2012

132 Saddleback Mt East



0 500 1,000 2,000 3,000 4,000 Meters

Pt #	Picture 1	Picture 2	GPS ¹	Description
2	 Facing E from Pt 2	 Facing W from Pt 2	N 44.12644 W 73.86703 Elev(m) 1231	Trail junction between Saddleback and Gothics is 10 m W of point. Balsam fir 2 cm dbh (diameter at breast height) is 1 m S of site. MBW tag is on a 25 cm dbh balsam fir 3 m NE. Mossy sideways root clump is 4 m S of site. A cut log lies on the side of the dirt trail 3 m E (15 cm diameter and 2 m long). Another cut log of the same general size is almost touching it 2 m further E. A dead snag 3 m tall, 5 cm dbh is 1 m NW.
3	 Facing E from Pt 3	 Facing W from Pt 3	N 44.12573 W 73.87001 Elev(m) 1304	4 m E of point is the top (W end) of an 8 m long section of sloping bedrock trail; the top (W) end stops at a root crossing the trail; at the bottom (E end) a log that had once crossed the trail is cut so there is a 0.3m gap. 1 m W the trail steps up 0.5 m on bedrock. 4 m W (upslope) is a log step with a small boulder in front in the center of the trail. 5 m W (upslope) is a 6 cm dbh balsam fir on the S side of the trail with a blue trail marker. 1 m N of trail at the survey point is a 7 m tall, 25 cm dbh snag. MBW tag is on a 7cm dbh balsam fir joined at the base to this snag on its W side.
4	 Facing N from Pt 4	 Facing S from Pt 4	N 44.12569 W 73.87314 Elev(m) 1357	1 m NE of the survey point is a 27 cm dbh balsam fir with a blue trail marker on its SE side (MBW tag on this tree). 1 m E is a 1.5 m tall, 15 cm dbh stump. Trail traverses a short section of bedrock (3 m long) at point. 4 m SE the canopy opens due to wind damage; there is a gap in the trees on the NE side of the trail. Also 4 m SE on the SW edge of the trail is a 1 m tall boulder, that is very mossy with 2 sapling paper birches growing on top. 5 m NW the trail widens suddenly to 2 m (for 15 m in length).

NOTE: Points 5 and 6 are DISCONTINUED as of 2013; trail was deemed unsafe to hike with pack/without special gear. This route now consists of ONLY three points.

Please survey this route in order, beginning with point 1.

¹ Please note that waypoint locations are provided in decimal degrees.

Visit www.flickr.com and search People for "Mountain Birdwatch" to view additional pictures of your route.