

Mountain Birdwatch 2.0

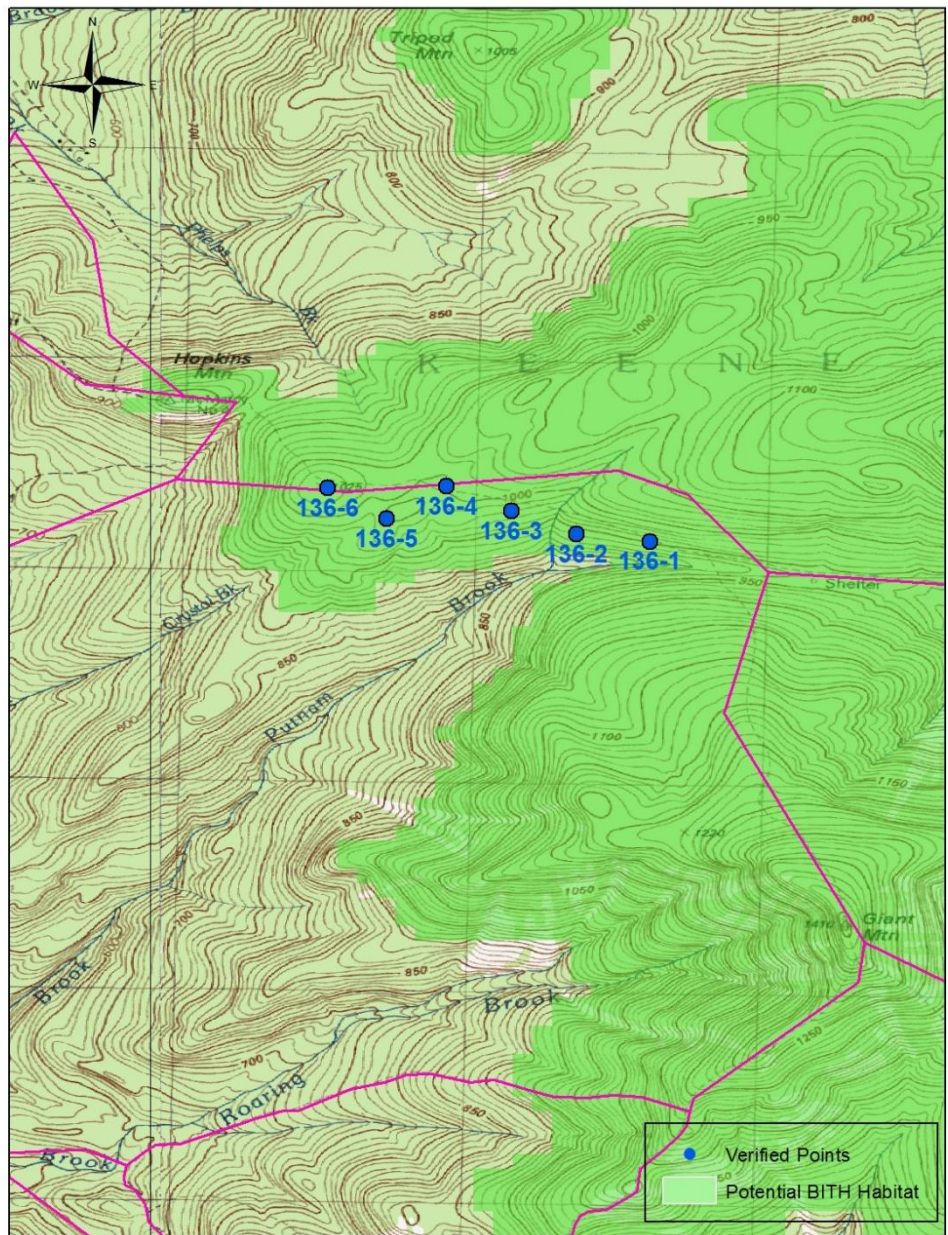
Route 136: Hopkins Mountain South, NY

Hike Duration/Difficulty: 2.5 hours; 3.75 miles to point 1; moderate







Route/Trail Access: Park at the Rooster Comb lot in Keene Valley, walk south along Rt 73 to Ranney Way on the E side of the road across an iron bridge, follow this private road until trail turnoff. The Ranney Trail (#24) continues 1.8mi to a junction with the Mossy Cascade Trail (#51). Take this trail left (NE) 0.7mi to a junction with the trail to Giant (#52). Go right (S), and points are over top of hill; it is an additional 1.25mi from the Giant trail junction to point 1.

Revised 11/2012

136 Hopkins Mt South



0 500 1,000 2,000 3,000 4,000 Meters

Pt #	Picture 1	GPS ¹	Description
1	 Facing W from Pt 1	N 44.17759 W 73.72868 Elev(m) 963	Light-gray boulder 2m E of site on N side of trail. Directly 1m S of site is a 3cm dbh* balsam 3 m tall. Paper birch 2m SW of site, 12cm dbh, leaning slightly S. Mt maple 6cm dbh leaning S over trail 4m N of site. Yellow DEC marker 6m SE of site on S side of trail on 10cm dbh paper birch, facing W. Yellow DEC marker 10m W of site on S side of trail on 5cm dbh snag, 3m tall; directly behind small snag is a paper birch snag 20cm dbh that splits 2 m up tree. MBW tag 3m SW of site on balsam 7cm dbh and 4m tall. 2 birches are crossed and cut 4m SE of site on S side of trail.
2	 Facing N from Point 2	N 44.17791 W 73.73179 Elev(m) 942	Small, fern-covered clearing at site. Flat rock with moss E of site next to trail ~1m ² . 2 logs directly W of site with roots 1m high and further log has 0.5 m stump at N end, logs are parallel. Yellow DEC marker 6m N of site facing N on paper birch 18cm dbh on E side of trail. MBW tag on balsam 15cm dbh 3 m E of site, next to 25cm dbh paper birch leaning slightly S. Paper birch snag 5m S of site on W side of trail, 15cm dbh and 15m tall. Creek crossing 90m N of site. Leaning paper birch snag 6m SW of site, pointing W, 4m from trail.
3	 Facing W from Pt 3	N 44.17890 W 73.73459 Elev(m) 1000	Site at small opening in canopy, some woody debris on ground. Small balsam 1m S of site, 3cm dbh, 2m high. Yellow DEC trail marker on birch 8cm dbh 4m S of site on W side of trail. Large 35cm dbh paper birch 4m SW of site. Dead snag leaning 45° angle parallel to trail, 15cm diameter, 14m long, high end is stuck on 30cm dbh paper birch 4m N of site on E side of trail, 4m off ground. Small, 1m high boulder at base of this birch, 3m N of site, E of trail. MBW tag on back of 6cm dbh balsam fir 2m N of site, tree is 5m tall.
4	 Facing N from Pt 4	N 44.17995 W 73.73736 Elev(m) 1006	Giant swamp edge is 10m W of site. Slight "S" in trail just W of site. Yellow DEC trail marker on paper birch 2m SW of site. Yellow DEC trail marker 3m N of site on balsam 10 cm dbh. Balsam 3cm dbh 2m N of site leans toward trail pointing S. Cut log ends at site and extends NW into forest. MWB tag on 3cm dbh balsam 1m on S side of trail from site, 2.5m tall. Short snag 2m SW of site 1.6m tall, next to a live balsam 3m tall. Small rock nubbin in trail directly on site.
5	 Facing N from Pt 5	N 44.17856 W 73.73991 Elev(m) 1004	Yellow DEC trail marker on paper birch snag 5m N of site, 12cm dbh and 6m tall. 3m W of point are 2 paper birch trees growing on top of a mossy rock; the one just N of the trail is 15cm dbh; 0.25m N is the 2nd at 30cm dbh. 4m SE of site is a 14m long balsam fir that has fallen to the ground; top of tree approaches edge of trail 4m NE. 2 mossy rocks in trail at point just under 1 m sq; flat, 15cm tall. MBW tag is 2m W on 8cm dbh balsam fir.
6	 Facing E from Pt 6	N 44.17988 W 73.74244 Elev(m) 1032	Site is in area of high, open canopy spruces. Site is 4m E of old log cut on either side of trail. Cut log 1.5m off ground 1m NE of site. Old stump covered in moss with roots on E side of trail, 3m NW of site, snag pointing 4m NW. Dead snag on top of mossy rock 5m SW of site 20cm dbh covered in lichen. Mossy flat rock 4m W of site at sharp curve in trail, 2m high by 3m long. MBW tag on 3cm dbh balsam 0.75m N of site, 4m tall. DEC foot trail marker is 5m E of site on 25cm dbh spruce on N side of trail.

Please survey this route in order, beginning with point 1. *dbh = diameter at breast height.

¹Please note that waypoint locations are provided in decimal degrees.

Visit www.flickr.com and search People for "Mountain Birdwatch" to view additional pictures of your route.