

Mountain Birdwatch 2.0

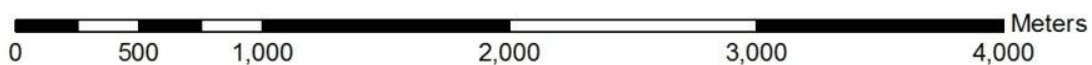
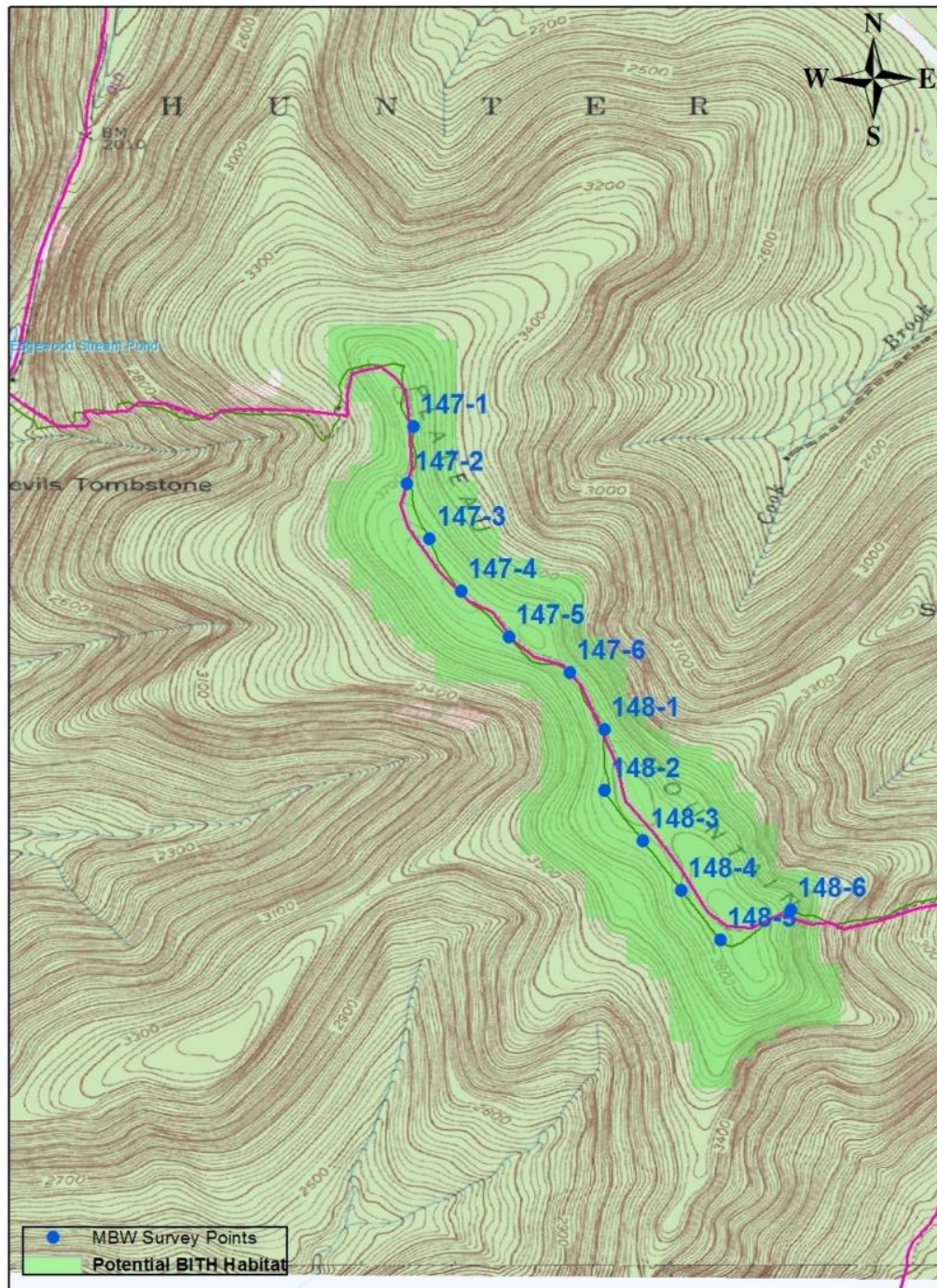
Route 147: Plateau Mountain North, NY







Hike Duration/Difficulty: 1.5 hours; 1.2 miles of strenuous difficulty. Parking fee for lot at bottom of mountain is \$6 per day, or you can pay \$18.75 to camp at Devil's Tombstone campground for the night and hike up in the morning, since there's no legal camping on top of Plateau.

Route/Trail Access: Park 0.2 miles E of Devil's Tombstone Campground on NY Hwy 214 at Notch Lake. Hike 1.2 miles up (S) strenuous trail to Plateau Mtn lookout. First point is ~300 m S on ridge trail.

Revised 11/2012

147 Plateau Mountain North



| Pt # | Picture 1 | GPS ¹ | Description |
|------|---|--|---|
| 1 |  Facing S from Pt 1 | N 42.15791 W 74.18702 Elev (m) 1117 | Point is ~10 m SW of 2nd overlook to E after Orchard Point Overlook. ~1m W is a large red spruce, 36 cm dbh (diameter at breast height). 2 m E is a 2 m high stump (20 cm dbh). 3 m S is a 30 cm dbh paper birch with broken top branches, and a large branch on E side broken and hanging down to ground at 45 degree angle. This birch has a red DEC trail marker on it. MBW tree tag is on W side of 10 cm dbh balsam fir 4 m W of survey point, and 2 m SW of large 36 cm dbh red spruce previously described. |
| 2 |  Facing N from Pt 2 | N 42.15565 W 74.18727 Elev (m) 1127 | 3 m N on the W side of the trail is a very large yellow birch 45 cm dbh and a very faded red DEC trail marker on its S side. 4 m S on the W side of the trail is the end of a large mossy log lying NE to SW, 60 cm diameter and 10 m long, from the trail to its 2 m tall stump. On the W side of the trail a moss covered rock running 5 m between two large yellow birches rises 0.5 m above the ground. 2 m SE of point is a balsam fir 28 cm dbh with thick moss at the base to 30 cm off the ground; and 2 red DEC trail markers on opposite sides. MBW tag is on 5 cm dbh balsam just W of yellow birch with faded marker. |
| 3 |  Facing S from Pt 3 | N 42.15350 W 74.18639 Elev (m) 1147 | Directly NE at trail edge is 10 cm dbh paper birch with 2 red DEC trail markers on opposite sides. At base of birch is a large flat rock, shaped like a trapezoid. About 4 m N the trail descends sharply for 5 m. SE is a large paper birch snag, 45 m dbh and about 8 m from point. In between this snag and the trail is a coniferous tree that was cut down. Directly W is a blowdown where 4 trees had their tops snapped off. MBW tree tag is on back of balsam fir 1 m W and 20 cm dbh at breast height. |
| 4 |  Facing N from Pt 4 | N 42.15144 W 74.18517 Elev (m) 1151 | Directly NE of point at trail edge is a large dead tree with many holes from insects, 90 cm dbh. Survey point is 15 m after emerging from a dense tunnel of balsam fir. Point is 4 m SE of sharp bend to S in trail around a large mossy rock 1.25 m long. 2 m W of trail is a blowdown. 10 m S the trail re-enters heavy balsam fir cover. MBW tag is 1 m S of point on a 30 cm dbh balsam fir on the W edge of the trail, 2 m off ground. There is also a faded red marker on the S side of this tree. |
| 5 |  Facing S from Pt 5 | N 42.14968 W 74.18329 Elev (m) 1154 | Point is located between small balsam fir (9 cm dbh) on E side of trail with red DEC trail marker and a large dead tree on W edge of trail (34 cm dbh). 5 m NW is a larger snag 45 cm dbh with a 15 cm diameter hole at base facing survey point. 3 m S is another snag 20 cm dbh on W side of trail. 5 m south of point is a 3 m log running E to W that has been sawed. A 1 m long section that was cut off this log is lying parallel to the trail next to it. MBW tag is on W side of 34 cm dbh snag just W of point 2 m above ground. |
| 6 |  Facing S from pt 6 | N 42.14828 W 74.18092 Elev (m) 1147 | 3 m SE of point is 18 cm dbh balsam fir with red DEC trail marker on its N side. 2 m S is large dead paper birch with a large portion of the bark to 3 m height missing (snag is 35 cm dbh). 3 m N of point is the end of a 30 cm diameter log (decaying with no bark) lying on the ground in a S to N direction. Next to it at a 90 degree angle is a mossy 10 m log running E to W. 13 m NW is a large stump with large shards of the trunk hanging from it, very decayed and covered with moss. 8 m SE of point a small conifer is fallen down over the trail. |

Please survey this route in order, beginning with point 1.

¹ Please note that waypoint locations are provided in decimal degrees.

Visit www.flickr.com and search People for "Mountain Birdwatch" to view additional pictures online.