

Mountain Birdwatch 2.0

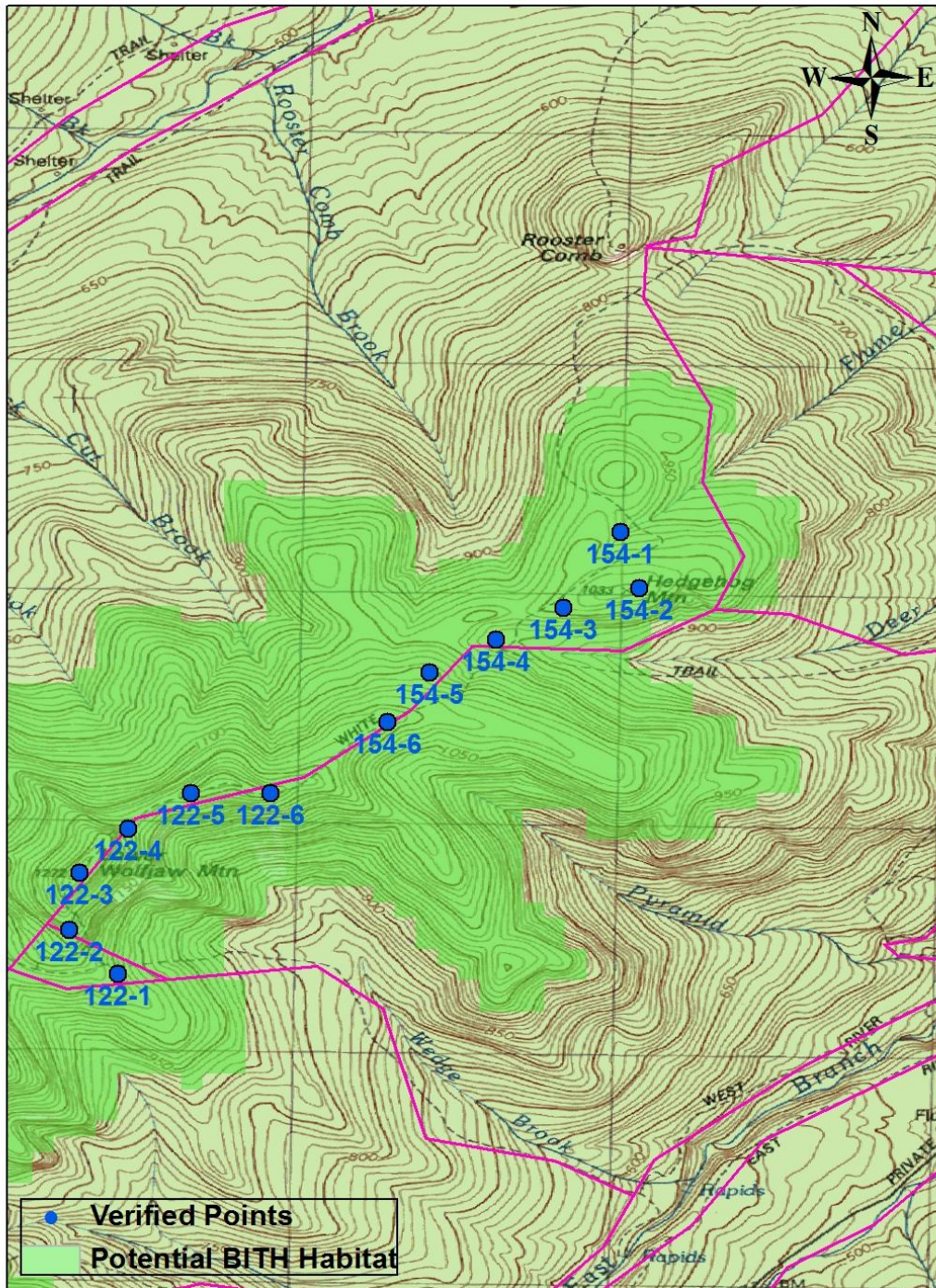
Route 154: Hedgehog, NY

Hike Duration/Difficulty: 3.5 miles to pt 1, moderate; 2 hours







Route/Trail Access: Take Deer Brook trail off Rt 73 (high water route recommended for ease of access), following the private road for 0.6 mi, then after re-entering woods take L at junction to go towards "Lower Wolf Jaw." Trail soon intersects another trail along old logging road, take a left for less than 0.1 miles, then take a right to follow W.A. white trail. Follow this 2.0 miles to junction with Hedgehog Trail, take R for 0.5 miles to point 1.

Revised 11/2012

154 Hedgehog



0 500 1,000 2,000 3,000 4,000 Meters

Pt #	Picture 1	GPS ¹	Description
1	 Facing N from Pt 1	N 44.16156 W 73.81155 Elev (m) 980	Point is 20m N of dry streambed crossing in between Hedgehog and N. Hedgehog. Point is at end of 25 cm diameter cut spruce log running NW to SE for 4 m until it disappears under very decayed log. 1 m E is 25 cm dbh (diameter at breast height) paper birch with a 6 cm dbh snag leaning from N to S onto its S side 4 m off ground. Pile of logs and branches parallel to trail at point on E side. Between birch and snag is 0.25 m tall, 0.6 m long, thin mossy stump. 1 m N crossing trail is 30 cm diameter mossy log, very decayed with gap cut in it for trail. 3 m S is upturned stump, mossy, with worn, long "driftwood"-like roots pointing up into air (tallest 2 m), on W side of trail. 2.5 m N on W edge of trail is 1 m tall 20 cm diameter stump. 1m behind mossy stump is cluster of 3 (2m tall) mossy boulders. 4 m NE is very large 2.5 m tall stump (60 cm diameter) with fallen log suspended 1 m off ground at stump and running W to E. Blue flagging is on 25 cm dbh balsam 3 m W of point on its W side.
2	 Facing N from Pt 2	N 44.15938 W 73.81080 Elev (m) 1024	Survey point at 30 cm dbh paper birch on E side of trail with yellow trail marker facing N; base of tree curves to S and is very mossy on S side on roots. 3.5 m NE is cluster of 3 paper birches and 1 balsam (30, 35 and 20 cm dbh birches and 12 cm dbh balsam). Trail slopes up for 8 m to S; is level for 10 m N. 4 m tall 25 cm dbh snag at top of slope (8m to S). 3 m S on W side of trail is 25 cm dbh balsam snag leaning N to S at 45 degree angle and uprooted on N side with small boulder beneath. Blue flag on 12cm dbh balsam fir 2m WNW of point.
3	 Facing W from Pt 3	N 44.15862 W 73.81377 Elev (m) 991	At survey point is 30 cm dbh balsam fir on N edge of trail with 2 yellow DEC trail markers facing E and W. Blue flag on 10 cm dbh balsam (on its N side) 1.5 m N of markers. Trail slopes steeply to W immediately W of point; trail is level for 7 m E before beginning a gentle upslope. At this point is 27 cm diameter cut log across trail. 2 m S is 18 cm dbh balsam fir leaning E to W with rootball freshly exposed upslope (E). 13 m W on S side of trail is 20 cm dbh balsam fir with yellow trail marker facing E. 9 m W on S side of trail is 10 cm dbh snag with broken top, forming upside down "L" shape pointing E to W.
4	 Facing S from Pt 4	N 44.15736 W 73.81640 Elev (m) 980	40 cm dbh red spruce with yellow Foot Trail marker is 5 m NE of point. 1 m x 1 m boulder is 3 m SW of point in trail. Trail goes from 0.5 m wide to 2 m at point because of drainage. Log cut out of trail has 2 remaining ends on either side of trail (15 cm diameter) 2 m N of point. Blue Flag is on back of 8cm dbh balsam 2 m NW. Old log 3 m long, 15 cm diameter lies E of trail near boulder 3 m S of point. Paper birch 45 cm dbh stands 1 m away from yellow birch (40 cm dbh) 5 m SE of point. Trail junction is 30 m S along trail.
5	 Facing N from Pt 5	N 44.15608 W 73.81900 Elev (m) 1064	Balsam 10 cm dbh with yellow Foot Trail marker is 3 m NE of point. Snag 30 cm dbh, 5 m tall is 3 m N of point. Log with cut end lies E to W 2 m N of point. Snag 40 cm dbh, 10 m tall is 4 m E of point. Blue Flag is on back of 5 cm dbh balsam 2 m S of point. 1 m log section lies 2 m SE of point.
6	 Facing E from Pt 6	N 44.15414 W 73.82065 Elev (m) 1120	Point is next to (N of) snag 18 cm dbh and 4 m tall. Paper birch snag with yellow Foot Trail marker is 5 m N of point, 7 m tall. Blue Flag is on 2 cm dbh balsam 3 m N of point. 2 birch branches 2 and 3 m long lie across mud in path, 1 and 2 m N of point. Leaning snag 25 cm dbh pointing N is 5 m S of point. Mess of crossed snags, logs and branches is next to trail 3 m E of point.

Please survey this route in order, beginning with point 1.

¹ Please note that waypoint locations are provided in decimal degrees.

Visit www.flickr.com and search People for "Mountain Birdwatch" to view additional pictures of your route.