

Mountain Birdwatch 2.0

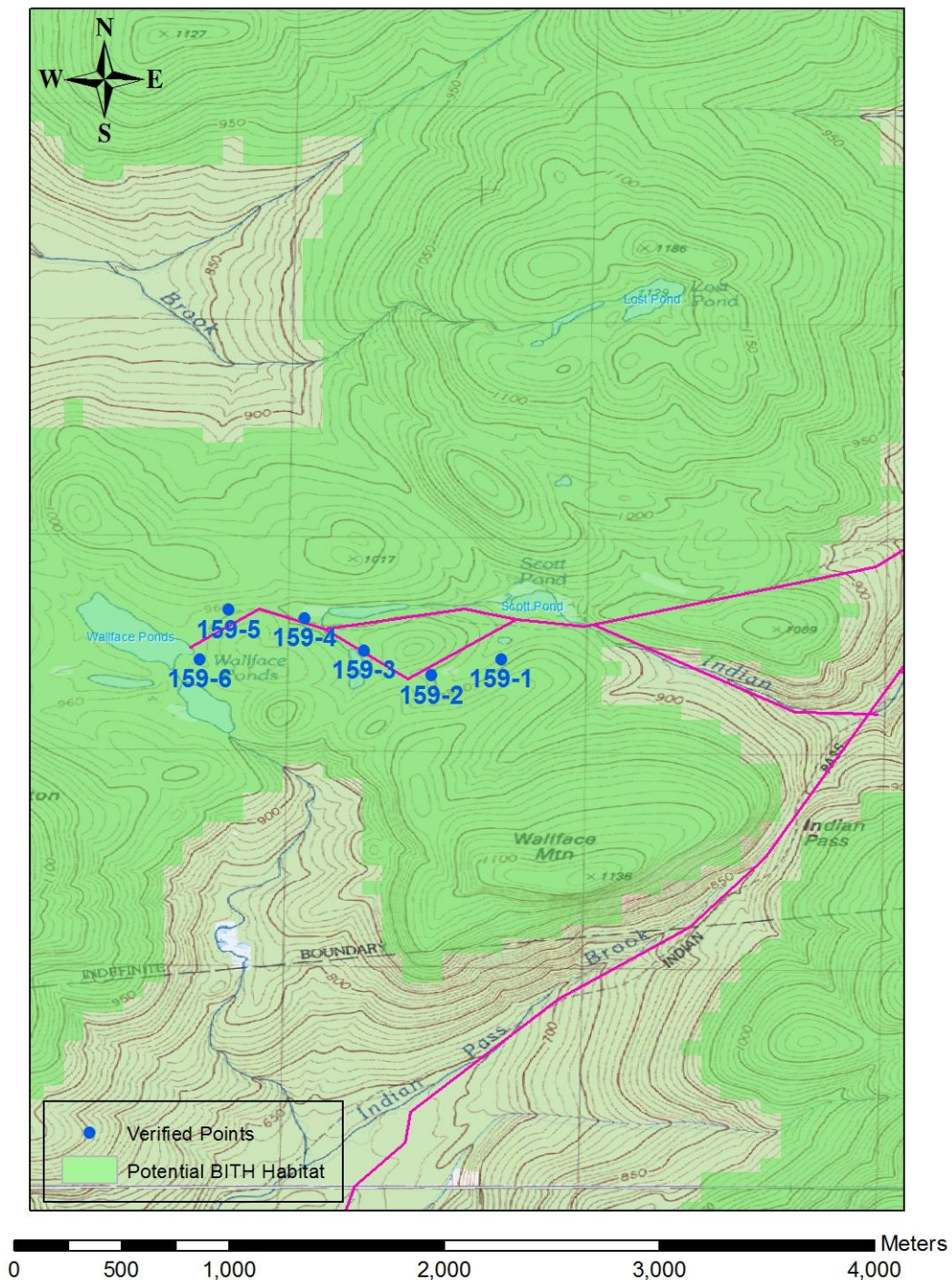
Route 159: Wallface Ponds, NY







Hike Duration/Difficulty: 3.5 hours. 6.2 miles of easy-moderate up and down slope.
Parking at the High Peaks Info Center of Adirondack Loj is \$10 a day, or \$40 per week.

Route/Trail Access: Take trail #s 75 and 76 from Heart Lake/Adk Loj trailhead/High Peaks Info Center. From Adk Loj to Rock Falls is 2.1 miles, to Scott Clearing Lean-to is 3.8 miles, to trail to Scott and Wallface Ponds is 4.1 miles; total 6.9 miles from Heart Lake. There are a couple of unmarked campsites along the south side of Scott Pond (established, but may not be legal?). To get there, cross the dam and go off trail along the south side, following the water line. Not far up, there is a herd path to the left, up into the woods are there are two camping areas in a stand of soft woods, both with fire pits. Note that this route can be very wet!

Revised 9/2013

159 Wallface Ponds



Pt #	Picture 1	GPS ¹	Description
1	 Facing E from Pt 1	N 44.14720 W 74.04037 Elev(m) 938	2 m SSW is 8 cm dbh paper birch, MBW tag on back; immediately behind is large mossy rock (1.5m x 3m wide) with four 2.5 m tall balsams growing on top. 1 m N is 7 m tall 15 cm dbh snag without bark. At point parallel to trail is fallen balsam log suspended 0.75 m above ground, its 1 m tall base is 3 m NE on N side of trail. 8 m E 3 logs are suspended over trail; one paper birch and a barkless log resting on top of it are suspended 2 m over trail, lying S to N. The 3rd snag (a paper birch) leans W to E 4 m above trail. 14 m E a very large boulder (3 m tall x 5 m long) sits parallel to trail on its N side; 2 m E of this rock is a 12 cm paper birch on N side of trail with 2 blue trail markers on opposite sides (W and E).
2	 Facing S from Pt 2	N 44.14651 W 74.04331 Elev(m) 963	At point 0.5 m N of trail is 35 cm dbh red spruce; MBW tag is on this tree. Immediately S of this large spruce is 3 cm dbh red spruce. 10 m E a 25 cm dbh paper birch leans N to S over trail, with horizontal 1 m birch stump immediately beneath. 7 m W is a cut red spruce log on both sides of trail, 18 cm diameter at cut point. Uprturned root mass of this spruce log is on N side of trail, 5 m from cut end. On N side of trail by the cut log on the S side is very mossy "mound" / old stump 0.3 m tall. Trail becomes flat 15 m E and soon opens into swamp.
3	 Facing S from Pt 3	N 44.14756 W 74.04610 Elev(m) 971	Point is at uprooted stump with cut end at W trail edge, diameter 25 cm. Barkless snag 2 m tall and 15 cm dbh is 2 m E of point, next to log pointing W to E away from trail for 15 m. Twin stumps directly E and W of trail are 0.25 m high, 15 cm diameter, 3 m S of point. MBW tag is on 5 cm dbh balsam 2 m W of point. Pond is 20 m W of point; 35m N along trail from point, edge of water is 5m from trail.
4	 Facing E from Pt 4	N 44.14891 W 74.04862 Elev(m) 955	Dry snag crosses trail 2 m N of point, 10 cm diameter. Old stump makes moss mound 0.5 m high 3 m S of point on E edge of trail. Fallen snag 1 m off ground parallel to trail is 2 m E of point. Snag lies across trail 1 m high and diagonal 5 m S of point, points W to E. MBW tag is on snag 15 cm dbh 2 m W of point. Point is 4 m W from edge of marshy upper end of pond; view of Algonquin to E.
5	 Facing W from Pt 5	N 44.14926 W 74.05177 Elev(m) 970	Point is at E edge of swampy "stream." Snag 10 cm dbh and 9 m tall is 1 m W of point. MBW tag is on 5 cm dbh balsam 1.5 m SW of point. Old log 15 cm diameter crosses trail in mud at point. Small spruce 3 m tall with 2 tops is 2 m S of point, each top is 3 cm dbh. Old stump-mound with moss is 3 m SW of point, 1 m high, with old rotting log coming out of it E along trail for 5 m.
6	 Facing N from Pt 6	N 44.14720 W 74.05300 Elev(m) 958	Point is off official trail, but still on readily distinguishable path. At trail terminus at Wallface Pond, head S on to herd path and continue to walk ~70 m. MBW tag on 22 cm dbh balsam fir 1 m SW of point. 8 m SW just S of path is 1.5 m tall x 3 m wide upturned rootball with many 1 cm diameter paper birches growing on top. Corner of pond shore is 15 m NW. Point is at junction of 2 herd paths; the one straight N is blocked 6 m N by several small fallen balsams. 5 m NE on unblocked and more distinct path is 1 m tall mossy stump, 45 cm diameter at base.

Please survey this route in order, beginning with point 1.

¹ Please note that waypoint locations are provided in decimal degrees.

Visit www.flickr.com and search People for "Mountain Birdwatch" to view additional pictures of your route.