

**Directions to Hartwell Tavern, Forest Bird Monitoring Site at:**

**Minuteman National Historical Park**

**Lexington/Concord, MA**

Site established 30 May, 2006 by Steve Faccio

*NOTE: All bearings are Magnetic North, **do not** adjusted your compass for declination. All listening stations are marked with blue flagging and an aluminum treetag, labeled "VINS HT#", where # indicates the Point Number .*

Park at the Hartwell Tavern Parking Area off Route 2A.

PT 1 – To reach PT 1, go to the NE corner of Parking Lot and follow a bearing of **60°** for 50m to PT on **8" twin-trunked Red Maple** next to flat boulder.

PT 2 – Follow a bearing of **172°** for 200m across RT 2A. Point is 40m from RT 2A on **8" Red Maple** at SE edge of fern glade.

PT 3 – Follow bearing of **298°** for 340m, up through ferns and greenbriar to top of hill, into mature open forest along deer trail. Sixty meters before reaching the point, you will cross a well-used trail. PT is on **6" Sugar Maple** in open woods 40m behind house.

PT 4 – Follow bearing of **300°** for 250m to PT on **3" Black Birch** about 50m S of SW corner of White Pine stand by RT 2A.

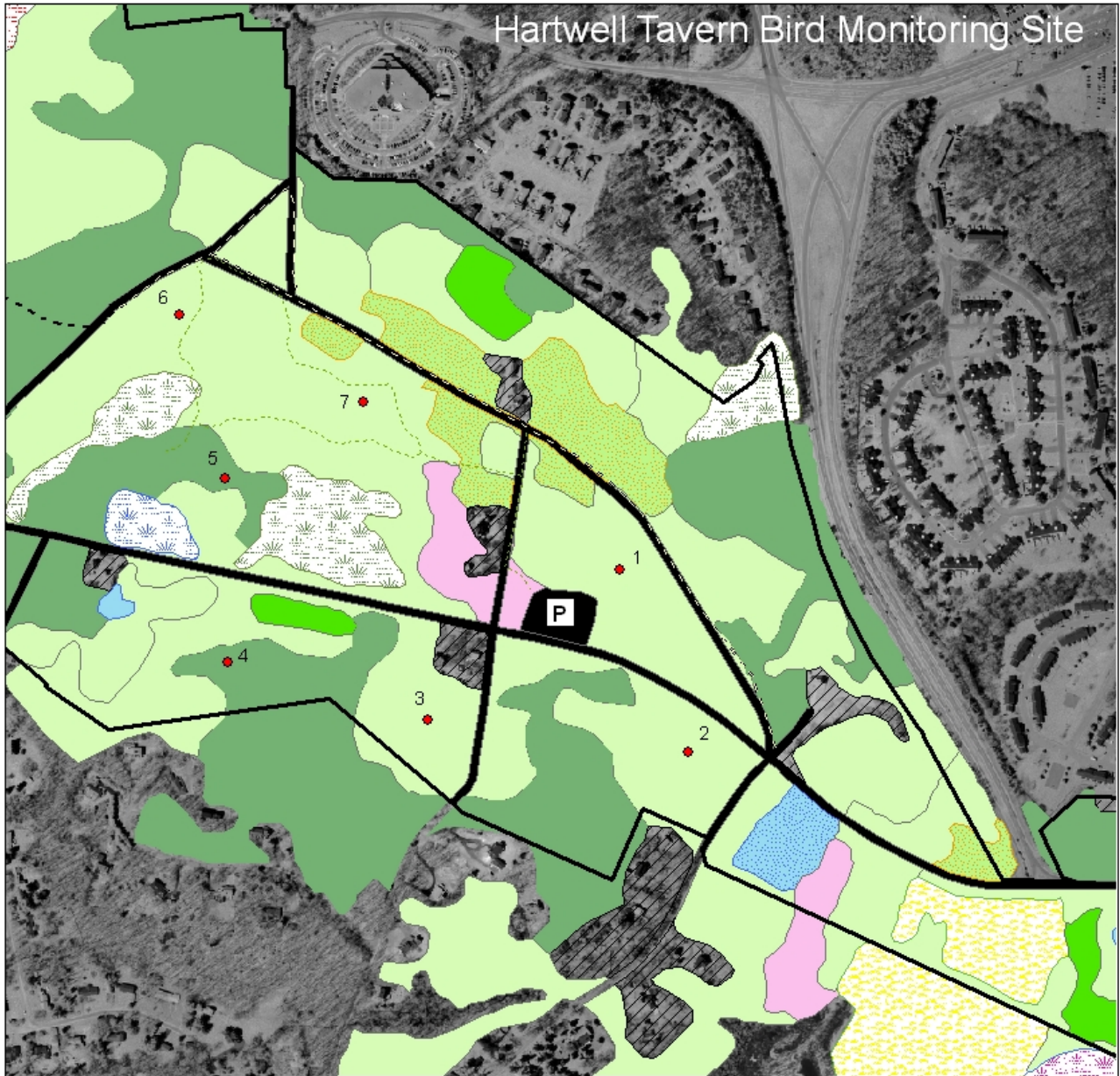
PT 5 – Go N, cross RT 2A and head W along road about 50m. Just beyond the "Do Not Pass" sign enter forest on stonewall perpendicular to road, following a bearing of **190°** for 50m to PT on **6" Red Oak** in open woods shortly after crossing second stonewall.

PT 6 – Follow a bearing of **345°** for ~50m to trail. Turn right on trail and follow it across boardwalk. About 30m after boardwalk ends, look for two 6" White Birch trees on left side of trail. From here, find PT on **4" Black Birch** 10m W of twin birches.

PT 7 – Continue along trail to intersection with Battle Road Trail, staying on foot trail uphill heading NE (parallel to Battle Road Trail). Follow the foot trail (called the Vernal Pool Trail) where it bends to the right (SE) into the forest. After ~50m, the trail will bend around to the NE again, and 20m further, locate a 6" Red Spruce on left side of trail. From here, follow bearing of **160°** for 20m to PT on **6" Red Maple**.

Continue on trail and out to Battle Road Trail, turning right. At next intersection (at Hartwell Tavern), turn right and follow trail to Parking Lot.

# Hartwell Tavern Bird Monitoring Site



## Minute Man National Historical Park

- |                                |                                  |                                  |
|--------------------------------|----------------------------------|----------------------------------|
| ● Hartwell Tavern Point Counts | Button Bush Swamp (fringe)       | Red Maple-Ash Swamp              |
| --- Hartwell Tavern Trail      | Cattail, Reed, Loosestrife Marsh | Red Oak-Northern Hardwood Forest |
| Park Boundary                  | Leatherleaf Bog                  | Residential                      |
| <b>Vegetation</b>              | Modified Successional Forest     | Sedge-Grass Wet Meadow           |
| <b>MAPCLASS_N</b>              | Mowed Field                      | Sedge-Mannagrass Fen             |
| Abandoned Field                | Oak-Hickory Forest               | Silver Maple Floodplain Forest   |
| Black Oak-Beech-Pine Forest    | Oak-Red Maple-Pine Forest        | Transmission ROW                 |
|                                | Open Water                       | Transportation and Roads         |
|                                | Other Agricultural Land          | Wetland Shrub Swamp              |
|                                | Paved                            | White Pine Forest                |

