

## Directions to Middle Ravine, Forest Bird Monitoring Site at:

### Saratoga National Historical Park, Battlefield Area

#### Saratoga, NY

Site established 4 May, 2006 by Steve Faccio

*NOTE: All bearings are Magnetic North, **do not** adjusted your compass for declination. If your compass is adjusted for declination, subtract 15° to the bearings indicated.*

*All listening stations are marked with blue flagging and an aluminum treetag, labeled "VINS MR #", where # indicates the Point Number .*

Enter the park and proceed to the Visitor Center at the NE corner. Continue on the Park Tour Rd about ½ mile. Just beyond Tour Stop 1, turn left onto a short gravel service road, then another left back onto the Tour Road. Continue about ½ mile and park at Tour Stop 6 on right.

PT 1 – To reach the first Point, follow the paved path E past cannons, then S to bench and interpretive sign about the Battle of Sept. 19, 1777. From here (marked "Start" on map), take a bearing of **145°** and follow it for 200m to PT 1 on a **5" White Pine** just across seep/shrub wetland.

PT 2 – Follow a bearing of **106°** for 250m across flat and downslope to PT on **triple-trunked 6" Hophornbeam** in flat area just S of stream.

PT 3 – Follow a bearing of **210°** for 200m uphill and across drainage to PT on **8" Red Maple** near top of slope on S side of stream.

PT 4 – Follow bearing of **279°** along deer trail, across drainage and uphill to flat bench above stream. PT is on **4" White Ash**, 10m beyond a large dead White Pine.

PT 5 – Follow bearing of **285°** for 250m across flat to PT on **5" White Pine**.

PT 6 – Continue on same bearing for another 250m across small drainage to mowed trail. Go left on trail for 50m crossing small wetland. Just before crossing second small wetland, follow bearing of **330°** for 50m through honeysuckle hell, to PT on **6" White Pine**.

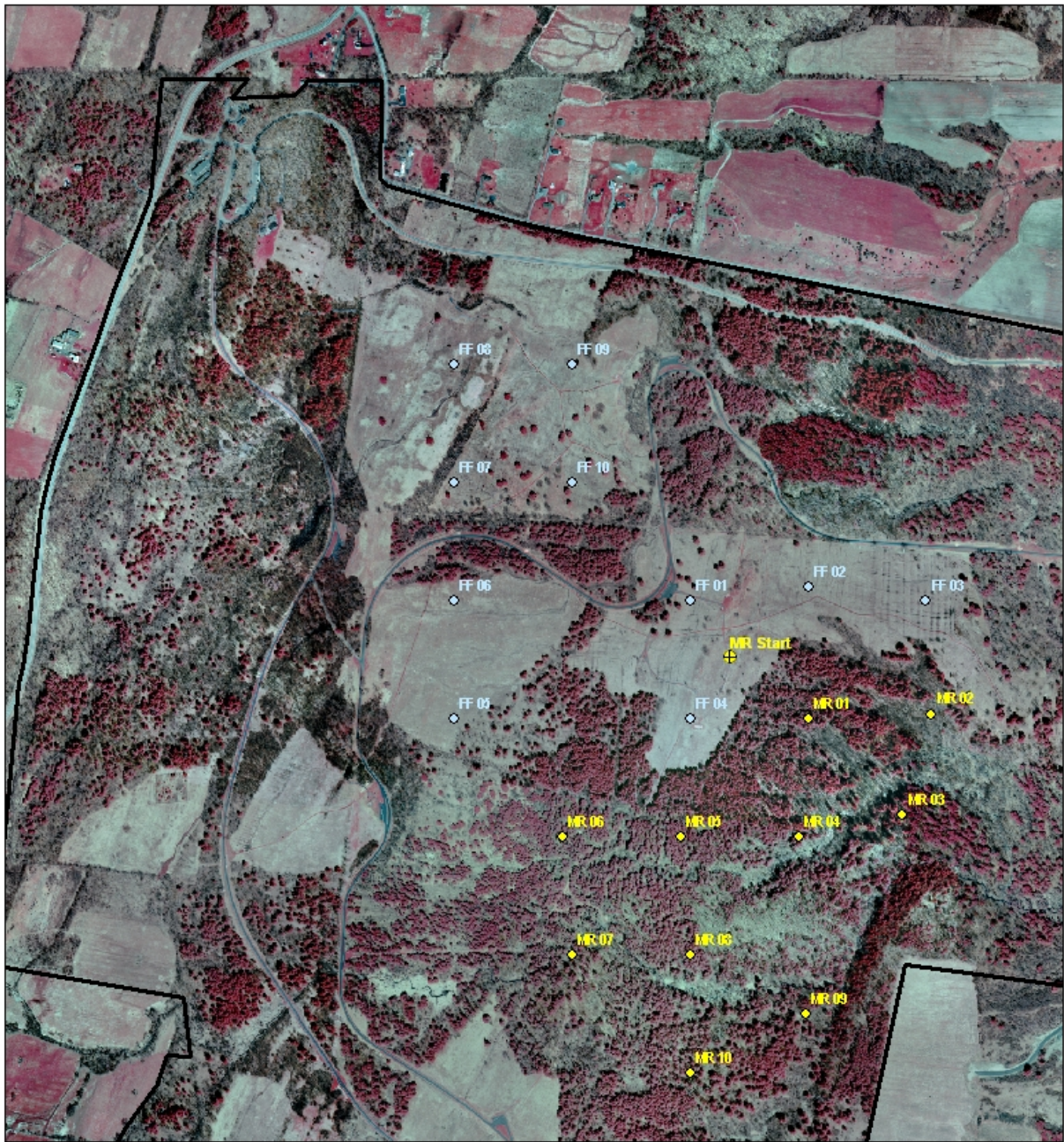
PT 7 – Return to mowed trail and head S, bearing left at fork. 40m beyond where trail crosses stream follow a bearing of **285°** for 60m to PT on **3" Hophornbeam** upslope from huge downed Sugar Maple and broken-topped pine.

PT 8 – Follow bearing of **108°** for 230m back across trail, down slope and across stream to PT on **5" White Pine** on SW-facing hillside.

PT 9 – Follow bearing of **132°** for 275m up hill and across stream to PT on E-facing side of hill above stream, marked on a **4" hickory**.

PT 10 – Follow bearing of **259°** for 250m along bench above ravine to PT on **8" twin-trunked Red Maple** on N-facing slope above stream.


Continue on same bearing to field at Stop 4 (Chatfield Farm). From here go right (NNE) on grassy, mowed trail back to Stop 6 and your vehicle.



Saratoga National Historic Park -- Freeman Farm and Middle Ravine Study Sites

**SITE NAME**

**SITE\_Name**

 Park Boundary

 Middle Ravine     Freeman Farm

260 130 0 260 Meters

0.3 0.15 0 0.3 Miles

