

# Mountain Birdwatch 2.0

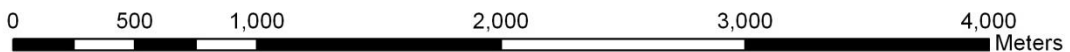
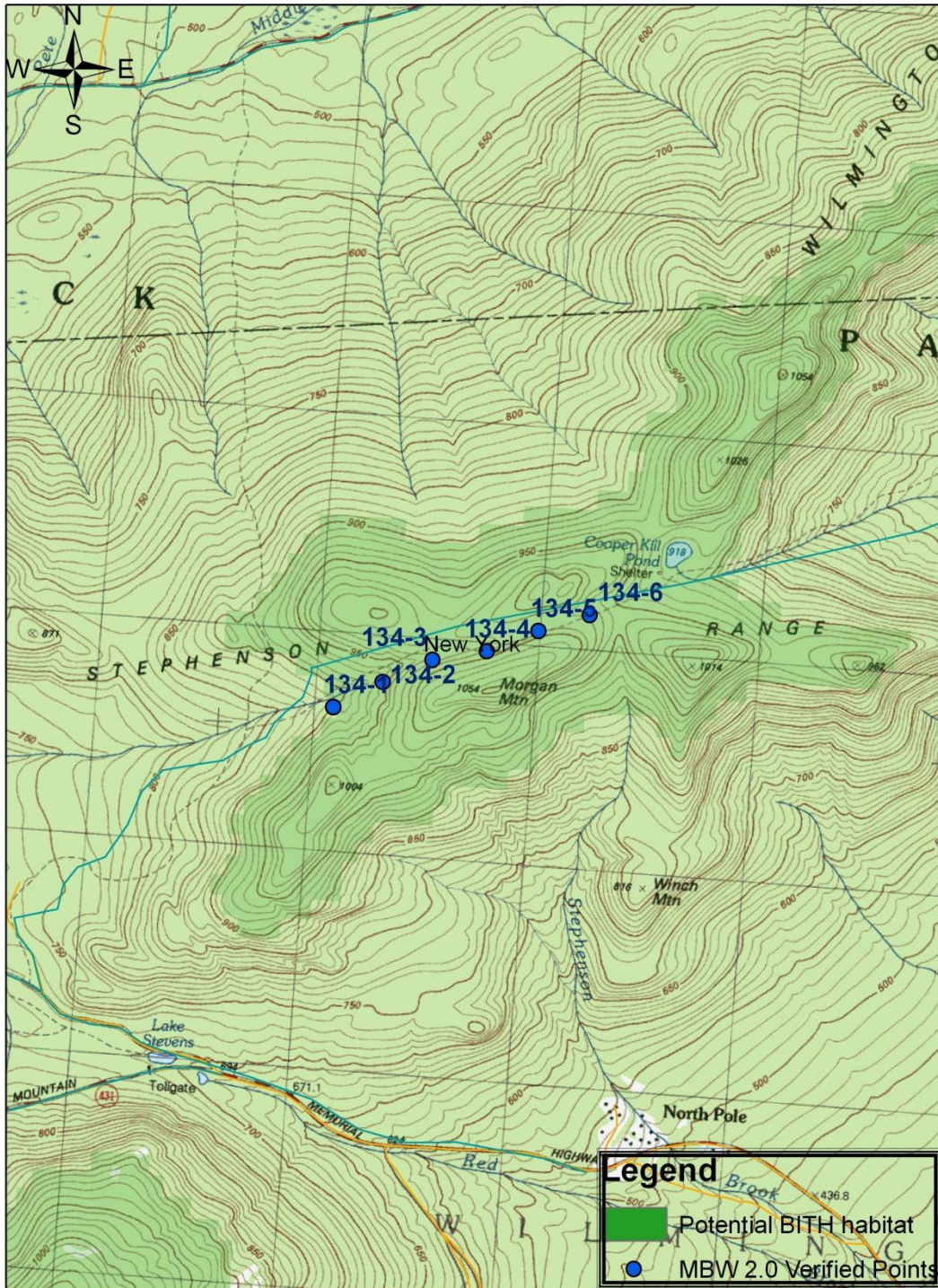
## Route 134: Morgan Mt., NY







**Hike Duration/Difficulty:** Hike from trailhead on Route 431 (sign for Cooper Kiln Pond, approx 3 miles).  
Hike ~1.5-2 hours to shelter at Cooper Kiln Pond. Point 3 is about .5 mile before you reach the shelter.

**Route/Trail Access:** No name-- but sign at trailhead for Cooper Kiln Pond Shelter.

Revised 3/2016

### 134 Morgan Mountain



Pt #	Picture	GPS <sup>1</sup>	Description
1	 Facing North from point 1	N 44.41762 W 73.86809  Elev(m) 898	2m E of the point, a red circle trail marker is mounted on the E & W sides of the 45cm yellow birch, which grows on the S side of the trail. Trail is rocky and climbing gently here. A 1m long, 0.5m wide flat rock is in the middle of the trail. MBW tag on N side of a 30cm paper birch on N side of trail.
2	 Facing South from point 2	N 44.41876 W 73.86536  Elev(m) 934	~10m E (uptrail) from the point, mountain maple saplings branching out along the trail for ~5m, open the canopy. A 45cm dbh* paper birch snag hangs over the trail, marked by a red plastic trail marker, 6m E. A rock, 75cm by 75cm, marks the point in the middle of the trail. MBW tag on 12cm balsam fir on S side of trail.
3	 Facing West from point 3	N 44.4198 W 73.86257  Elev(m) 977	Point is in the middle of a gentle "S" curve in trail. 5m W of the point, an orange circle trail marker and a white circle above it are mounted on a 30 cm dbh paper birch. 3m W an old stump ~45 cm diameter sits in the middle of the trail. MBW tag on 12 cm dbh balsam fir on N side of trail.
4	 Facing East from point 4	N 44.42027 W 73.8595  Elev(m) 1001	~8m W of the point, a red circle "foot trail marker" is mounted on the E and W sides of a 45cm paper birch, growing on the N side of the trail. A 45cm snag is on the S side of the trail, ~ 1m E of the point. MBW tag on N side of a 30cm balsam fir on N side of trail, w/ a long diagonal scar running vertically up the trunk from the base of the tree.
5	 Facing East from point 5	N 44.42124 W 73.85661  Elev(m) 1000	~50m along this stretch of trail major blowdowns of trees on N side of trail. Point is ~25m from the beginning of blowdown area (midpoint). Red circle trail markers on E and W side of spruce snag, 3m E of point on N side of trail. MBW marker on 30cm dbh paper birch on N side of trail.
6	 Facing South from point 6	N 44.42202 W 73.85374  Elev(m) 987	60cm paper birch on S side of trail at the point w/ 7m high vertical slit on its N side, running along the trunk from the ground up to its first branch. Forest has very scarce understory (almost no shrubs or subcanopy). MBW tag on N side of 17cm dbh balsam fir, on N side of trail.

\*dbh = diameter at breast height. Please survey this route in order, beginning with point 1.

<sup>1</sup>Note that waypoint locations are provided in decimal degrees.