

Mountain Birdwatch 2.0

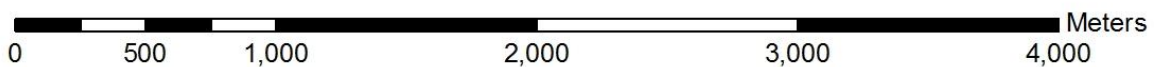
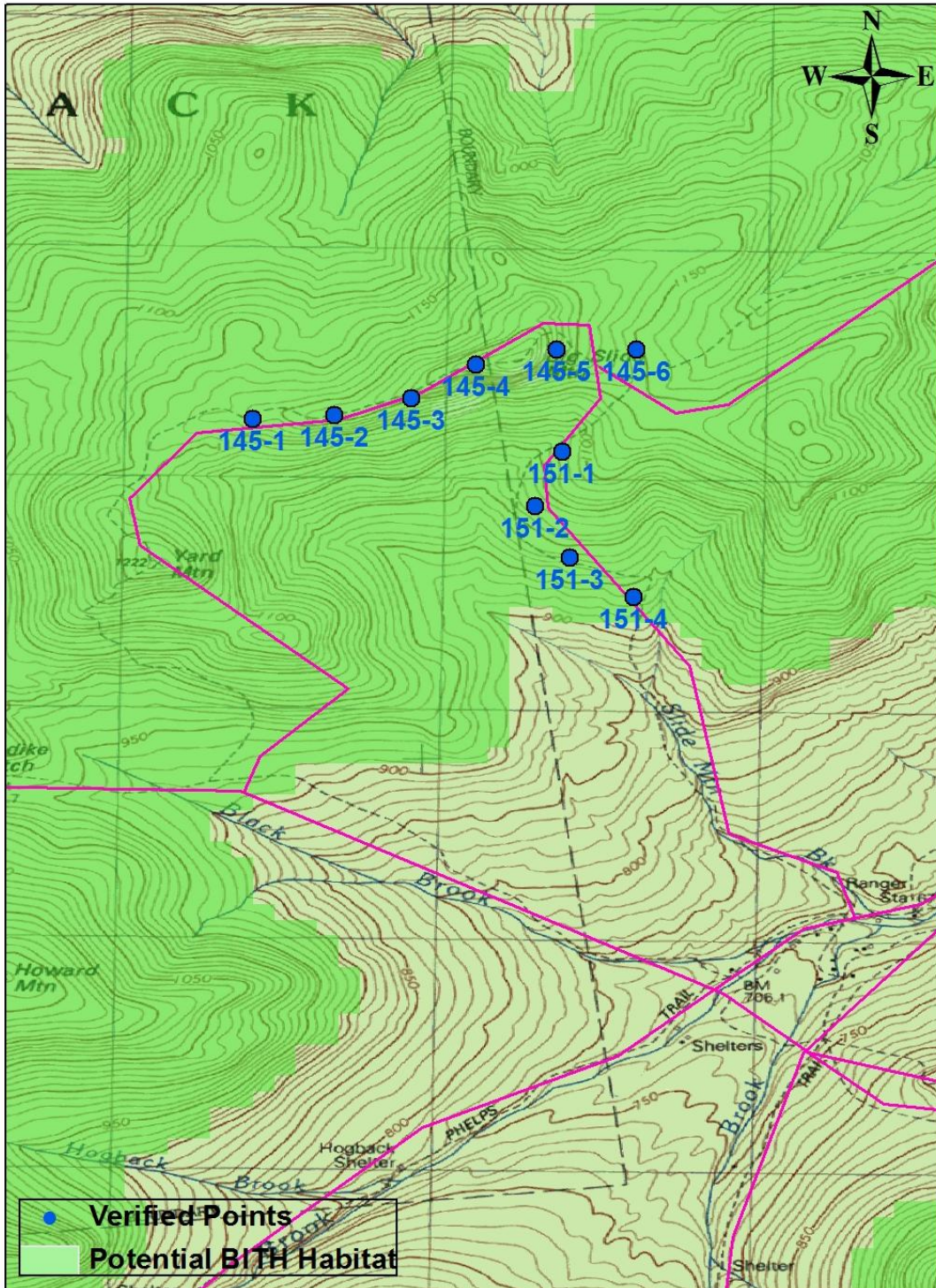
Route 151: Big Slide South, NY









Hike Duration/Difficulty: 2.5 hours; ~5 miles to pt 1; easy for first 3.1, then easy-moderate for last 2 miles.

Route/Trail Access: From the Garden trailhead in Keene Valley (parking fee \$7 per day) hike along Phelps's Trail easy 3.1 miles, then up Slide Mt. Brook Trail, easy to moderate for 2 miles to point 1.

Revised 9/2013

151 Big Slide South



Pt #	Picture 1	Picture 2	GPS ¹	Description
1	 Facing W from Pt 1	 Facing E from Pt 1	N 44.17880 W 73.86912 Elev (m) 1077	3 m N/NE on N edge of trail is a 24 cm balsam with 2 red trail markers on its SW side. MBW tag is on 4 cm dbh (diameter at breast height) balsam 0.5 m off the N side of the trail at survey point. On S side of trail at point is a small uprooted root ball of a log without bark, 20 cm dbh and 20 m long, which runs parallel to the trail uphill (SW to NE). 1 m S the trail goes over a large slab rock, tilted steeply (2.5 m wide by 1.5 m high). 6 m NE (uphill) of point the trail goes over a jumble of small boulders for a distance of 4 m. At the top of this section on N edge of trail is 0.5 m tall and 12 cm diameter stump, sawed off at an angle and without bark. 5 m SW (downhill) of site is a small paper birch leaning over the trail from NW to SE, 12 cm dbh.
2	 Facing N from Pt 2	 Facing S from Pt 2	N 44.17669 W 73.87021 Elev (m) 1038	1 m N of point is 2 m tall balsam stump 20 cm dbh joined at base to 12 cm dbh balsam. 4 m S on W edge of trail is a double stump; ground up and shattered (area 0.5 m by 0.25) with segments of trunk lying off trail SW to NE. 8 m N on the W side of trail are several smaller trees that have blown down and some of their ends near the trail were sawed. 6 m S is a 22 cm dbh mountain ash leaning across the trail; its base on the E edge. MBW tag is 2 m E of site on 5 cm dbh balsam.
3	 Facing N from Pt 3	 Facing S from Pt 3	N 44.17467 W 73.86883 Elev (m) 1005	At trail edge to E is a 20 cm dbh balsam fir log lying SW to NE, 8 m long, with end at trail cut at sharp angle with saw. 0.5 m N trail steps up 0.5 m; there is 25 cm diameter root from a 30 cm dbh paper birch on the edge of trail, which runs across the top of this "step" perpendicular with soil eroded behind it uphill. 1 m S in center of trail is a rounded rock 0.5 by 0.5 m. 13 m N on both sides of trail are several (2 to E and 3 to W) paper birch logs that had previously laid across trail but have been sawed in half. Suspended above the trail at this same point is a 20 cm dbh paper birch leaning from E to W. 2 m S on W side of trail is 2 m tall 24 cm dbh stump without bark. MBW tag is on W side of 10 cm balsam 0.5 m W of point.
4	 Facing W from Pt 4	 Facing S from Pt 4	N 44.17313 W 73.86637 Elev (m) 956	Paper birch snag 2 m S of site, 20 cm dbh. MBW tag is on 7 cm DBH balsam tree next to this birch, 3 m S of site. Paper birch snag 3 m E of site 30 cm DBH. Small opening starting 2 m N of site, ferns and birch log pointing N for 6 m. Crooked birch snag leaning N onto tag tree, 5 cm DBH 4 m tall. Large, mossy mound 1 m NE of site with stump remnants and small snag fallen off it; snag is 8 cm diameter and points S to trail edge. Very mossy log lies parallel to trail starting 0.5 m E of site, 3 m long, points S.

Please survey this route in order, beginning with point 1.

¹ Please note that waypoint locations are provided in decimal degrees.

Visit www.flickr.com and search People for "Mountain Birdwatch" to view additional pictures of your route.