

DIRECTIONS TO FBMP SITE AT

Lye Brook Wilderness, Green Mountain National Forest

WINHALL, VT

Site Established By: Steve Faccio, 8 February 2000

From Manchester Center, take Route 30/11 East (toward Peru) about 2.0 miles. About 0.5 miles after passing the Route 7 interchange, turn right onto E. Manchester Rd. and then make an immediate left onto Rootville Rd. At the end of this road is the Rootville Trailhead. If you have a high clearance, 4WD vehicle, you should be able to continue driving up the jeep trail about 2 miles to a road on your left leading to a camp. Park here, being careful to avoid blocking the camp road. From here, continue on foot heading east along the Long/Appalachian Trail (white blazes). You will soon cross a footbridge and come to the junction of the Branch Pond Trail and an old logging road to the east. Take the old logging rd. about 350 meters to where it just begins to descend – watch for blue flagging on a 6”dbh Yellow Birch on the right side of the trail labeled “VINS LB START.”

*NOTE: All bearings are True North (magnetic north +15 °),
All listening stations are marked with blue flagging and an aluminum treetag,
A small amount of blue flagging is used every 50m between the points to help keep you on-track. Remember this is a designated Wilderness Area, so flagging must be kept to a minimum.*

If you drive up the jeep trail, it is a 15-minute walk to Point 1. From the Rootville Trailhead, it is a 75-minute walk to Point 1.

POINT 1 – From the start, take a bearing of **140°** and follow it for 100 m to Point 1, marked with a tree tag (“VINS LB 1”), on a 8”dbh beech between 2 blow-downs with large, tipped-up rootballs.

POINT 2 – To reach Point 2, continue on a bearing of **140°** for 200 m (blue flags every 50 m). You will go up a short, gentle slope and then descend slightly to Point 2 on a 8”dbh sugar maple.

POINT 3 – Change bearings to **170°** and follow it for another 200 m. You will cross a small intermittent stream just before the 150 m flag. Point 3 is 50m beyond on a 6”dbh American beech.

POINT 4 – Change bearings again to **180°** (due south), and proceed for another 200 m. Just beyond the 100 m flag you will cross the Long Trail. Point 4 is on an 8”dbh yellow birch next to a large (~20”) White Birch.

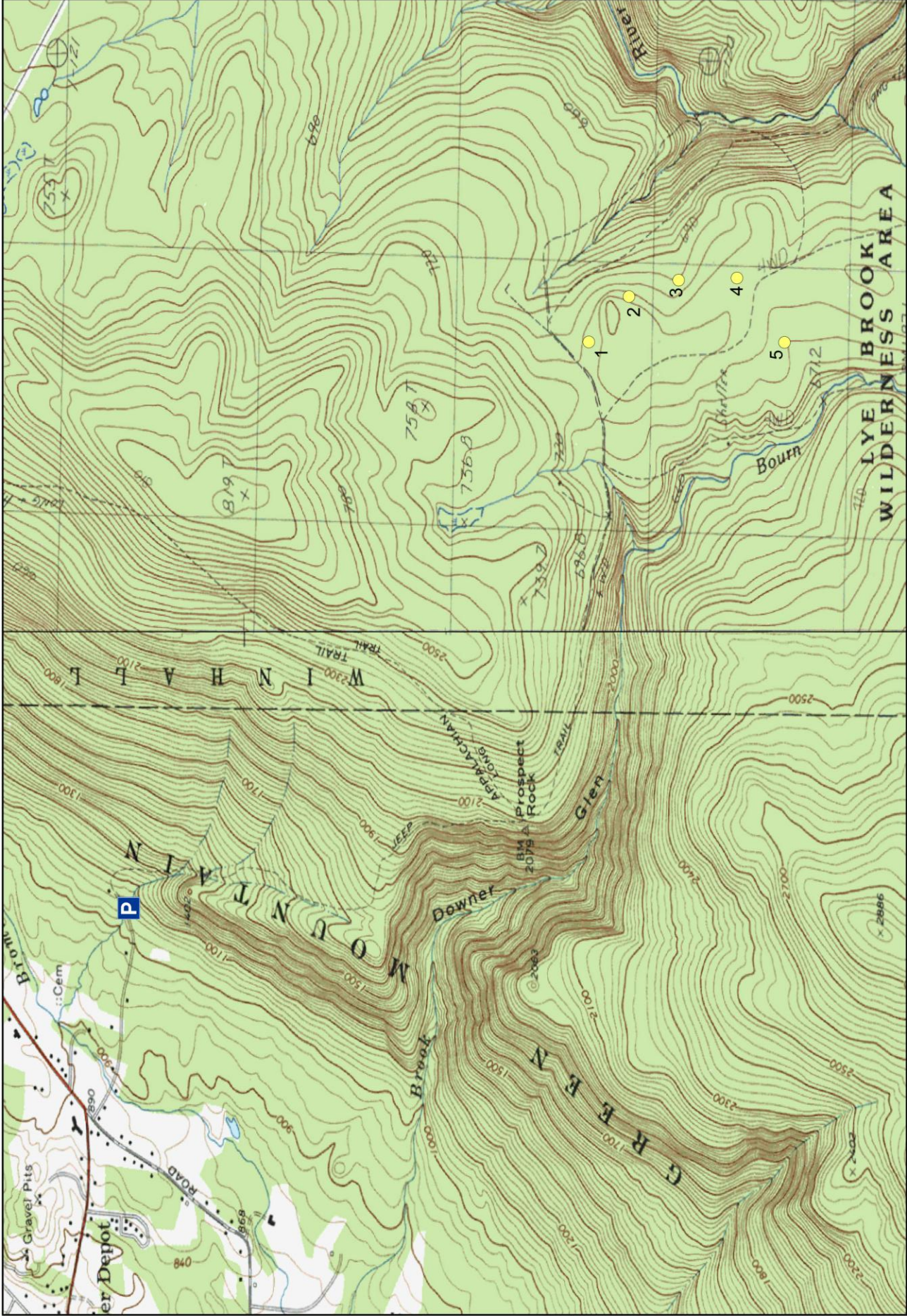
POINT 5 – One again, change compass bearings to **220°** and continue for 200 m to the last listening station. As you near the point, you will pass a balsam fir stand on the left and cross an old logging road – Point 5 is 50 m beyond on a 6”dbh beech.

Return to the old logging road and head north. It will soon meet up with the Long Trail and bring you back to the footbridge and your vehicle.

Point Count Coordinates (Decimal Degrees)

Point Count	LAT	LONG
1	43.15100849	-72.98629233
2	43.14915240	-72.98421093
3	43.14687788	-72.98344919
4	43.14421713	-72.98336872
5	43.14203382	-72.98631378

*NOTE: Surrounding each point count station are three vegetation plots, each located 30 m away on **magnetic** bearings of 0°, 120°, and 240°. They are labeled with treetags inscribed with the point count number and a letter corresponding to the bearing: B (0°), C (120°), and D (240°). Be careful not to confuse these points with the actual point count stations.*



Forest Bird Monitoring Program - Lye Brook Wilderness Area

● Point Counts

