

## DIRECTIONS TO FBMP SITE AT:

### STEAM MILL BROOK WMA

#### STANNARD, VT

Established 21 January, 1997, by Steve Faccio  
Field-checked on 15 May, 1997

*NOTE: Bearings are True North (magnetic +15 )*

*From the west:*

From the cemetery in Stannard, go east on Stannard Mt. Rd. for 3.0 miles to a skid trail on the right (south) side of the road. This trail is just before the highest point on Stannard Mt. Rd. and there is a pulloff to park a vehicle here.

*From the east (Lyndon):*

From exit 23 off I-89, go west on Stannard Mt. Rd for ~8 miles to the road's highest point. Just as you begin to descend, look for an old skid trail on the left (south) side. Park here.

Follow the skid trail south toward an un-named pond. Just beyond a large, leaning Yellow Birch on the right side of the trail, watch for a large, rotten log lying on the left side and parallel to the trail. Opposite this log is a 6" DBH cherry tree flagged with yellow.

From here, take a bearing of 230° and follow the yellow, then blue, flagging around the west side of the pond through the spruce/fir stand. You will soon cross a stream. Continue following the blue flagging spaced about every 25 meters. Once you have transitioned into a northern hardwood forest, follow the flagging along the edge of the spruce/fir toward the SE until you reach a flag with "210°" written on it. From here, follow a bearing of 225° (210° magnetic) and the blue flagging to **Point 1**.

**Point 1**, marked "VINS ST # 1" with blue flagging and an aluminum tree tag, is at a large (20" DBH) **yellow birch**, near a large, standing dead spruce and several large, yellow birch snags.

Continue on a bearing of 225° following the blue flagging for 200 meters to **Point 2**, located on a **12" DBH sugar maple**. As you approach Point 2, you will follow a ledge area on your right and the ground will slope steeply off to your left. Point 2 is marked with double blue flagging and a tree tag, and reads, "VINS ST #2".

Again stay on the 225° bearing for 200 m to **Point 3**, marked with flagging and a tree tag on a **14" sugar maple**.

To reach **Point 4**, change to a bearing of **245°** and follow the flagging for 200 meters, staying on the contour. Point 4 is marked with flagging and a tree tag on an **8" DBH sugar maple**, just beyond an area with many maple saplings that have been heavily browsed by moose.

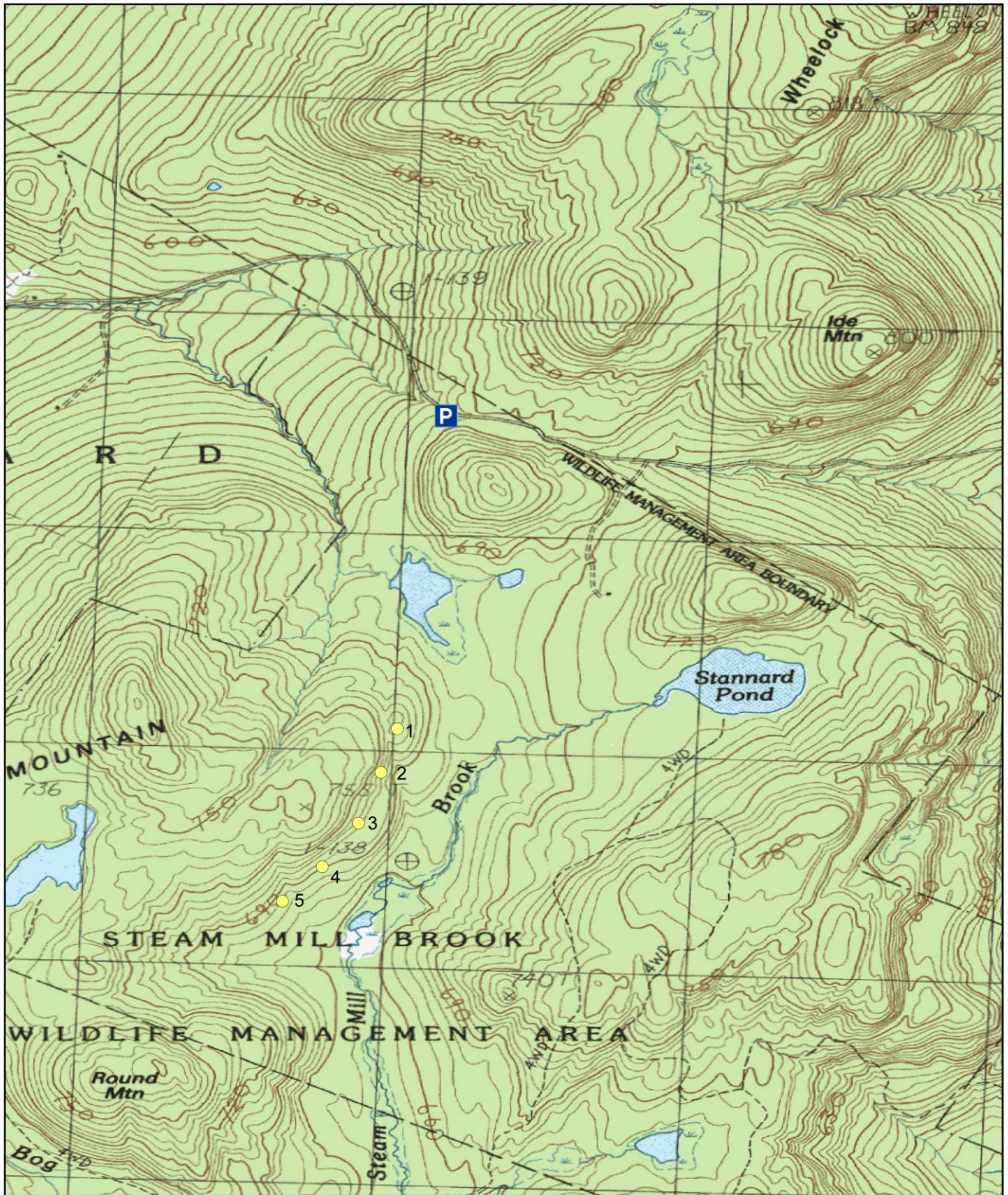
Continue on the 245° bearing, following the flagging, to reach **Point 5** and the final listening station. Point 5 is located on a **12" DBH yellow birch** just beyond a small stream and seep.

Retrace your steps and follow the flagging back to the skid trail and your vehicle.

#### Point Count Coordinates (Decimal Degrees)

Point Count	Lat	Long
1	44.52748060	-72.18049237
2	44.52566743	-72.18116828
3	44.52358067	-72.18210706
4	44.52176213	-72.18360373
5	44.52034593	-72.18523988

*NOTE: Surrounding each point count station are three vegetation plots, each located 30 m away on **magnetic** bearings of 0°, 120°, and 240°. They are labeled with treetags inscribed with the point count number and a letter corresponding to the bearing: B (0°), C (120°), and D (240°). Be careful not to confuse these points with the actual point count stations.*



500 250 0 500 Meters

**Forest Bird Monitoring Program - Steam Mill Brook WMA**



● Point Counts

