

Mountain Birdwatch 2.0

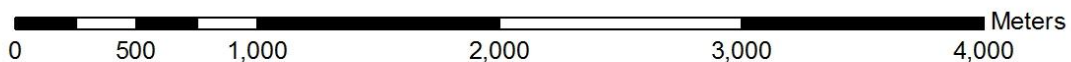
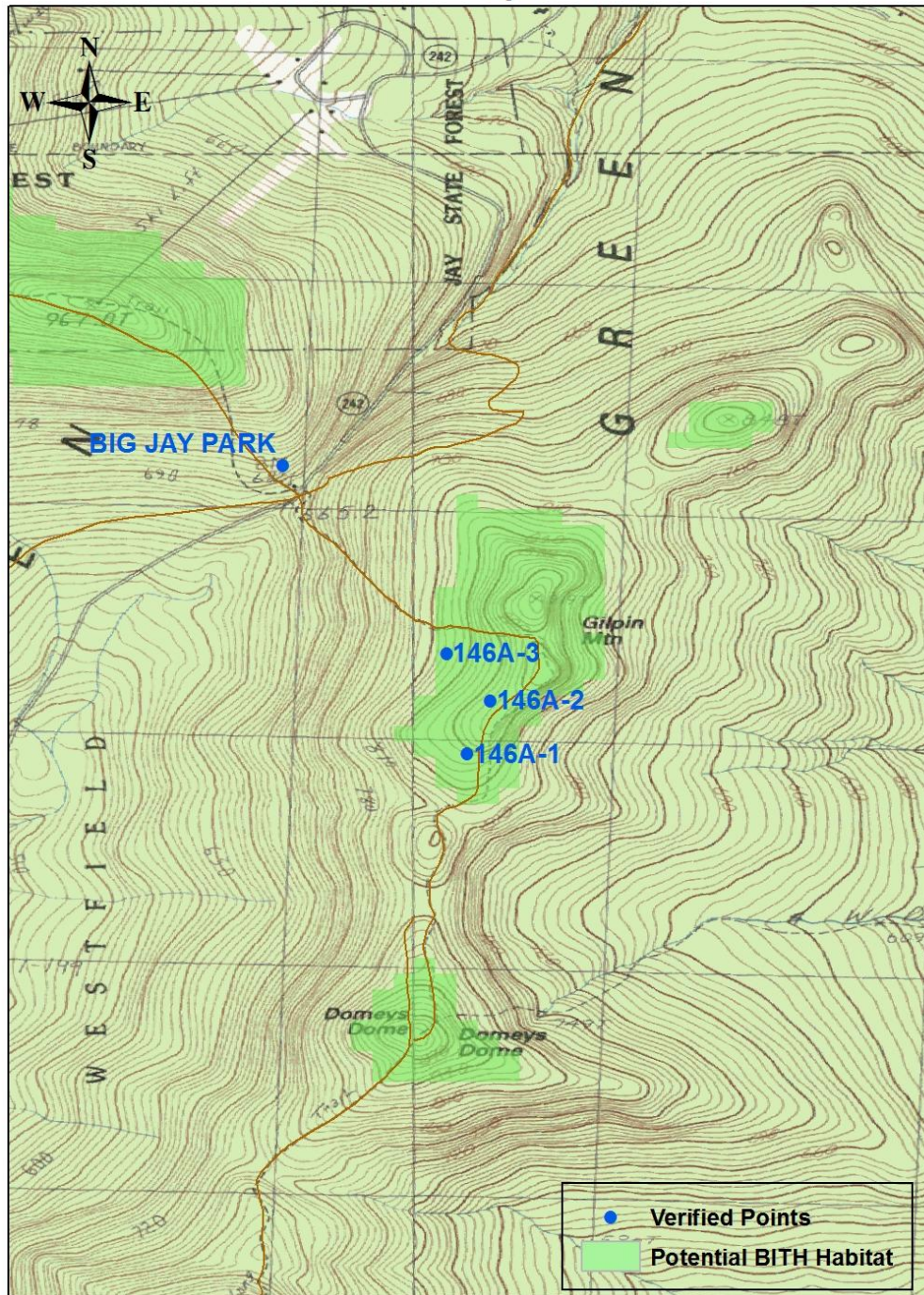
Route 146: Gilpin Mountain, VT







Hike Duration/Difficulty: About 30-40 minutes to point 1.

Route/Trail Access: These points are on the Long Trail. Park on route 242 in Jay, VT (about 1.4 miles west of the entrance to the resort/lodge). Take the Long Trail south. Point 1 is about a mile south of the parking lot.

Revised 12/2012

146A Gilpin Mt



Pt #	Picture 1	Picture 2	GPS ¹	Description
1	 Facing N from Pt 1	 Facing S from Pt 1	N 44.90249 W 72.49746 Elev(m) 870	Dead birch on south side of trail 2m from point. 7m tall, emergent balsam fir with 2 points at top visible 12m S of point. Dead 2-trunked barkless snag, 5m tall, 10m north of point. Mossy rock 10 cm high, .75m long protrudes into trail 1m north of point.
2	 Facing W from Pt 2	 10 m E of Pt 2	N 44.90460 W 72.49652 Elev(m) 889	Trail heads steeply downhill for 10 m NW of point. Paper birch and mountain ash mostly canopy at point. Trail heads E-W at point but curves south after it heads downhill. Large (2m) root ball, with roots facing trail, 10 m East of point.
3	 Facing N from Pt 3	 Facing S from Pt 3	N 44.90647 W 72.49826 Elev(m) 828	Can see top of Jay to north. Mossy rock- 1m long and 40cm high- in trail 1m south of point. Fallen log 10 cm wide across trail 5m north of point, with small stream flowing across sunken rock in trail 2m north of that. To south, yellow birch and balsam flank trail, making a "doorway".

Please survey this route in order, beginning with point 1.

¹ Please note that waypoint locations are provided in decimal degrees.

Visit www.flickr.com and search People for "Mountain Birdwatch" to view additional pictures of your route.