

# Mountain Birdwatch 2.0

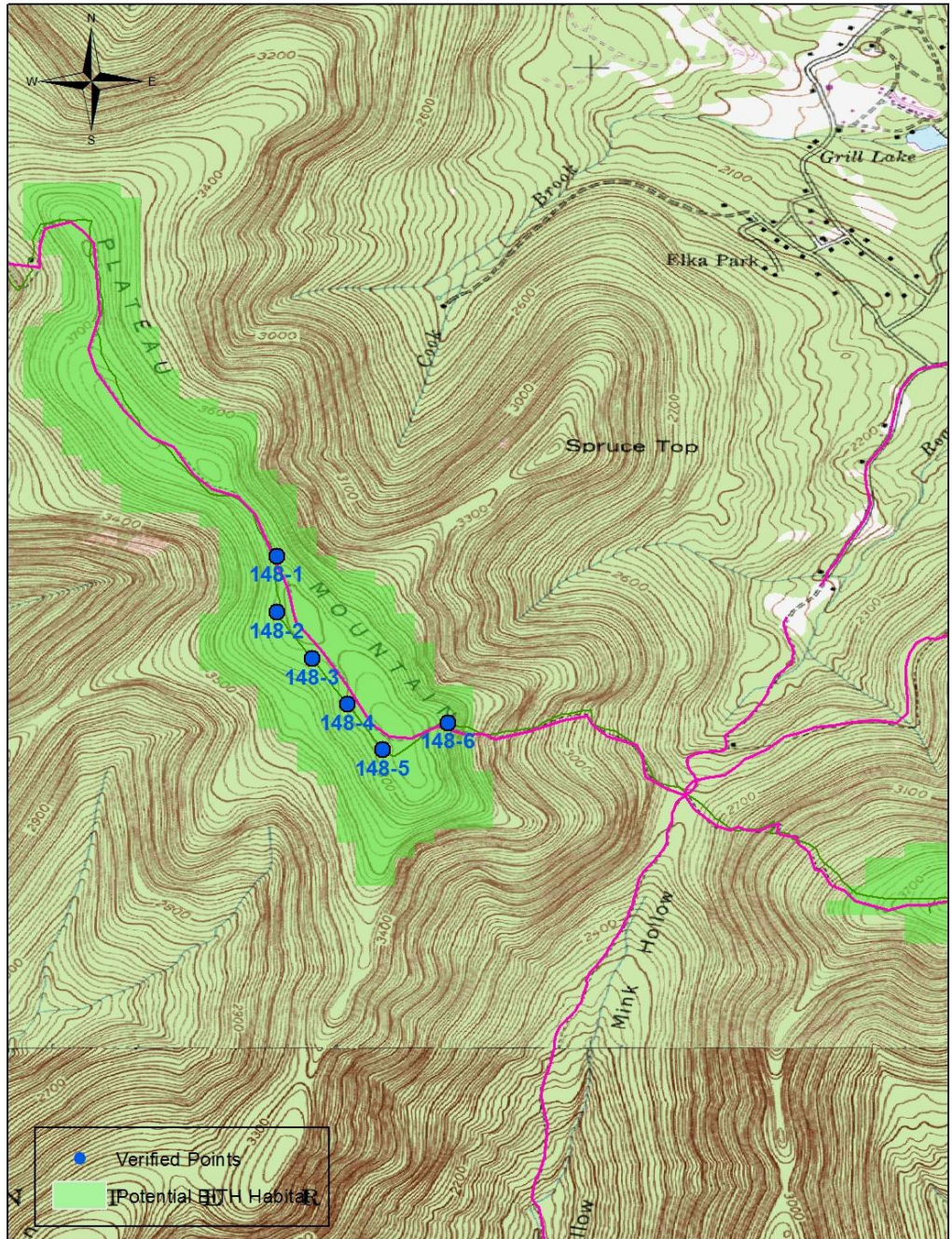
## Route 148: Plateau Mountain South, NY

**Hike Duration/Difficulty:** 2 hours total: 1.2 miles of strenuous difficulty up Plateau Mtn to the Orchard Overlook, 1.5 hours; then ~1 mile along ridge trail to first point, mostly flat, easy difficulty, ~30 min hike. Parking fee for lot at bottom of mountain is \$6 per day, or you can pay \$18.75 to camp at Devil's Tombstone campground for the night and hike up in the morning, since there's no legal camping on top of Plateau.



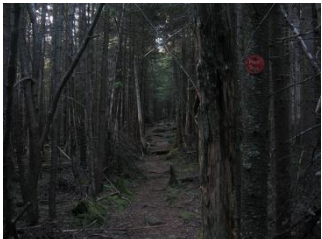



**Route/Trail Access:** Park 0.2 miles E of Devil's Tombstone Campground on NY Hwy 214 at Notch Lake. Hike 1.2 miles up (S) strenuous trail to Plateau Mtn lookout. First point is ~1 mile S on ridge trail.

Revised 11/2012

## 148 Plateau Mt South





Pt #	Picture 1	GPS <sup>1</sup>	Description
<b>1</b>	 Facing N from Pt 1	<b>N</b> 42.14605 <b>W</b> 74.17957 <b>Elev (m)</b> 1142	Site on N edge of flat mossy rock in trail. Large 40 cm dbh (diameter at breast height) balsam 2m S of site. 1 m sq boulder with moss 2 m S of site. "S" shaped snag 10 cm dbh 2.5 m W of site, 3.5 m tall. Several cut trees ~10 cm diameter lying 1 m W of trail 2 m from site. 3 m long flat rock shelf/step as part of trail 45 m N of site. 15 cm dbh balsam 2.5 m NE of site with yellow blaze 2 m high on trunk. MBW tag 2 m E of site on 5 cm dbh balsam. 30 min hike from overlook at N end of Plateau.
<b>2</b>	 Facing S from Pt 2	<b>N</b> 42.14365 <b>W</b> 74.17956 <b>Elev (m)</b> 1149	Trail junction for Mt. Trembler is 55 m S of site. Balsam fir directly W of site, 10 cm dbh, 6 m tall with red trail marker on N and S sides. Cut logs to E and W of trail with 1 m gap between, 30 cm diameter, 1.5 m S of site, 8 m long to E side. Rock and roots covered in moss NE of trail at site with 3 dbh balsam. Balsam 5 cm dbh is 2 m N of site bent over trail pointing E. 2 dead snags E of trail, 1 m E is 8 cm dbh and 1.75 m E is 12 cm dbh. MBW tag is 1 m E of site on 2 cm dbh balsam 2 m tall. 35 min hike S from overlook at N end of Plateau
<b>3</b>	 Facing N from Pt 3	<b>N</b> 42.14168 <b>W</b> 74.17805 <b>Elev (m)</b> 1152	Site is next to two dead stumps to E, one .75 m tall and old with 9 cm diameter, jagged; other stump is cut at 1 m tall and 6 cm diameter. Small 5 cm dbh spruce is bent over trail over point. 20 cm dbh old snag with old red trail marker is 2 m N of site. Old, jagged stump 10 cm diameter and 0.5 m tall is 1 m W of site. Fir snag with red trail marker is 2 m N of site, 10 cm dbh and 6 m tall. MBW tag is on snag 2 m W of site, 8 cm dbh and 5 m tall. 35 min hike S from overlook at N end of Plateau.
<b>4</b>	 Facing S from Pt 4	<b>N</b> 42.13974 <b>W</b> 74.17657 <b>Elev (m)</b> 1160	Old snag is 0.5 m SW of site, 15 cm dbh and 6 m tall with N-facing old red trail marker. Balsam fir 1 m SE of site 15 cm dbh with N and S - facing new red trail markers. Old log 25 cm diameter lying parallel to trail E of site, ~20 m long, 2 m off trail. Old stump 3 m SE of site at base of old log, 1.25 m tall, mossy base. Slight slope to N of site with medium rounded rocks in trail. Old snag N/NE of site, 3 m away, 8 m tall, 35 cm dbh. MBW tag is 1.5 m E of site on balsam 2 cm dbh, 1.75 m tall. 40 min hike S from overlook at N end of Plateau.
<b>5</b>	 Facing N from Pt 5	<b>N</b> 42.13781 <b>W</b> 74.17504 <b>Elev (m)</b> 1166	Point is in between cut log pieces, E and W of trail, 1.5 m gap, 35 cm diameter, with half of diameter on E log cut off into seat. Old snag 2 m E of site, 3 m tall, 45 cm diameter. Another log cut with 2 m gap over trail, 4 m S with 45 cm diameter. "S" shaped snag 3 m N next to trail, 15 cm dbh. Leaning snag 3 m S of site, 3 m high, pointing NE, 20 cm dbh. Trail turns at right angle 40 m S of site. Tag on balsam 1 m SW of site, 10 cm dbh. 40 min hike S from overlook at N end of Plateau.
<b>6</b>	 Facing N from Pt 6	<b>N</b> 42.13897 <b>W</b> 74.17229 <b>Elev (m)</b> 1141	Site at foot of rock shelf 1.5 m tall to W. Spruce tree 3 m S of site with trail markers 20 cm dbh. Trail bends at site as part of switchbacks. On higher rock shelf 2.5 m NW of site is 5 cm dbh spruce with red foot trail marker facing S, tree is 4 m tall and next to 3 m tall snag to N with 8 cm dbh. Dead, leaning paper birch across trail 5 m high, 4 m S of site. Vista is 25 m W uphill of site, looking E. View from site blocked to E by small spruce 8 cm dbh and fir 4 cm dbh. MBW tag is on 8 dbh spruce 1.25 m E of site. 50 min hike S of overlook at N end of Plateau.

Please survey this route in order, beginning with point 1.

<sup>1</sup> Please note that waypoint locations are provided in decimal degrees.

Visit [www.flickr.com](http://www.flickr.com) and search People for "Mountain Birdwatch" to view additional pictures of your route.