

Directions to Wilkinson Trail, Forest Bird Monitoring Site at:

Saratoga National Historical Park, Battlefield Area

Saratoga, NY

Site established 4 May, 2006 by Steve Faccio

*NOTE: All bearings are Magnetic North, **do not** adjusted your compass for declination. All listening stations are marked with blue flagging and an aluminum treetag, labeled "VINS WT #", where # indicates the Point Number .*

Enter the park and proceed to the Visitor Center at the NE corner. Continue on the 1-way Park Tour Rd about ½ mile. Just beyond Tour Stop 1, turn left onto a short gravel service road, then another left back onto the Tour Road. Continue about 1 mile and park at Tour Stop 7 on left.

PT 1 – To reach the first Point, walk SE down the Tour Road ~150m and turn left (east) onto the Wilkinson Trail. Continue on the WT about 100m to interpretive post "E". From here, take a bearing of **340°** and go 50m to PT 1 on a **4" Sugar Maple** 10m from stream edge.

PT 2 – Return to the WT and head E ~80m to a large, 6-trunked White Pine on the left (north) side of the trail with blue flagging on a sapling nearby. From here, take a bearing of **25°** and go 80m to PT 2 on a **4" White Ash** at the bottom of hill on edge of wetland.

PT 3 – Return to trail and go about 180m to large, 4-trunked Red Maple on the right side of trail. From here, take bearing of **242°** and go 50m to PT on **6" Elm** part-way down slope.

PT 4 – Return to trail and continue east ~180m to an open, mixed forest with many ferns and a small Hophornbeam flagged with blue. PT is **40m N** of trail on a **6" hickory**

PT 5 – Continue east on the trail for ~75m to where it bends south. From here, take a bearing of **82°** and go 140m to PT on **8" Red Maple**.

PT 6 – Follow a bearing of **150°** for 250m across 2 small drainages to PT on **4" Hophornbeam** in an area with abundant Mayapple.

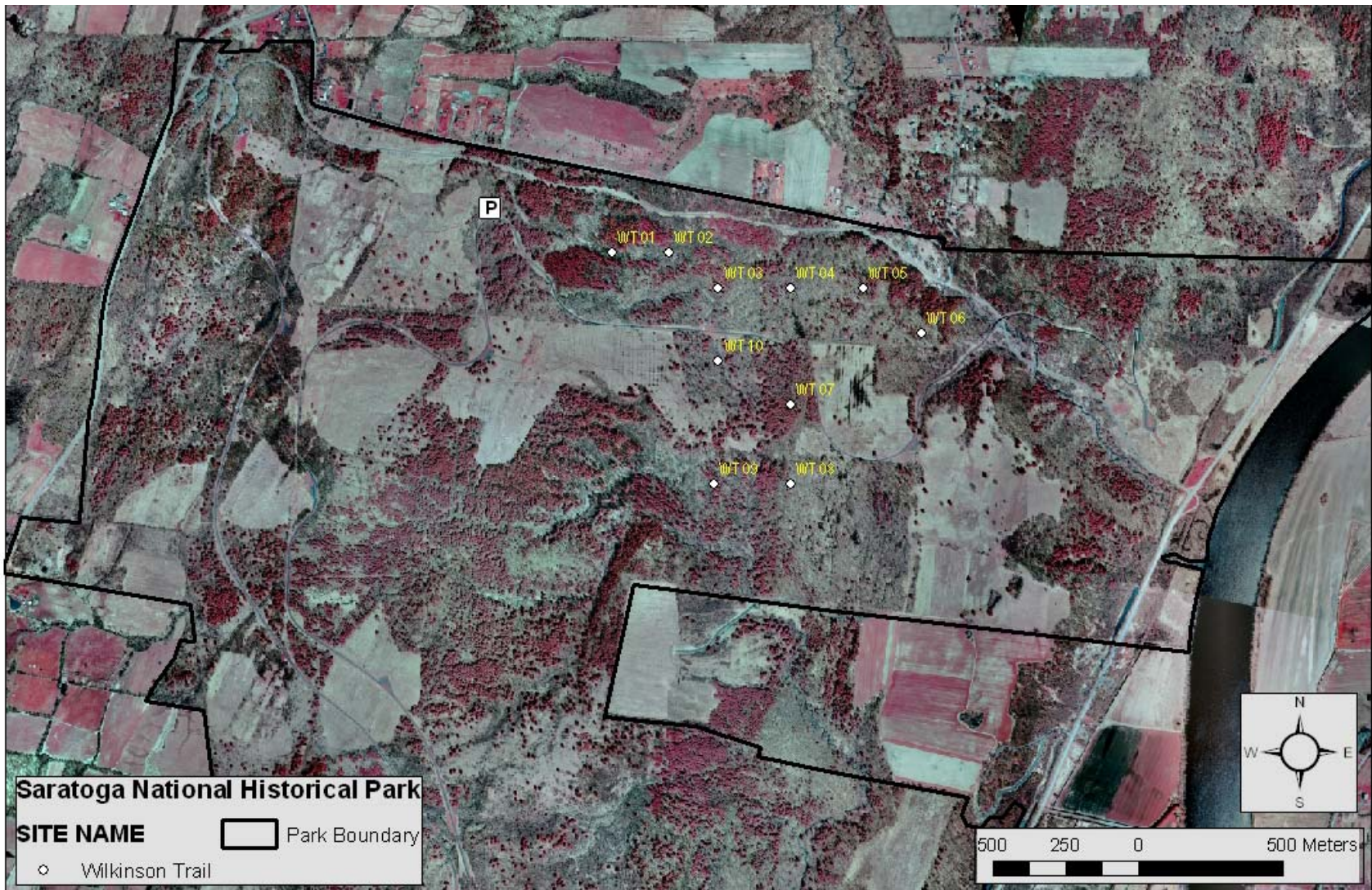
PT 7 – Go 30m south to trail and head west, then turn left onto trail heading south through field. Continue past interpretive marker to next bend in between 2 large maples and take a bearing of **270°**. Follow it across the field and park road to PT 75m from road on a **6" White Pine**.

PT 8 – Return to road and head south, making a right onto the Wilkinson Trail. Go down trail about 175m to PT, just 5m west of trail on a **6" Red Maple**.

PT 9 – Continue south on WT across drainage and up hill along flat bench. PT is on **4" Elm**, 5m west of trail, just before trail bends to the west.

PT 10 – Continue up WT to field and interpretive post "J". Take a bearing of **28°** and follow it across the field and downslope along deer trail to PT in open, flat streamside area. PT is marked on a **14" White Ash** 5m NW of huge (40") willow.

Head NNW along drainage to park road and follow it west to return to vehicle.



GPS Coordinates for Wilkinson Trail Point Counts in Decimal Degrees and UTM (NAD 83).

Site Name	Point Number	Latitude	Longitude	UTM North	UTM East
Wilkinson Trail	WT 01	43.00811682	-73.63331574	4762622.35517381	611382.26990773
Wilkinson Trail	WT 02	43.00811162	-73.63088968	4762624.99817409	611580.00145709
Wilkinson Trail	WT 03	43.00696137	-73.62882941	4762500.00147603	611749.99749852
Wilkinson Trail	WT 04	43.00692458	-73.62576272	4762500.00108513	612000.00209057
Wilkinson Trail	WT 05	43.00688770	-73.62269612	4762499.99970902	612249.99983272
Wilkinson Trail	WT 06	43.00546277	-73.62027409	4762345.00028312	612449.99710564
Wilkinson Trail	WT 07	43.00332354	-73.62584302	4762099.99606597	612000.00049089
Wilkinson Trail	WT 08	43.00084786	-73.62589817	4761824.99671992	612000.00321063
Wilkinson Trail	WT 09	43.00088684	-73.62914851	4761824.99644824	611735.00091395
Wilkinson Trail	WT 10	43.00471075	-73.62887945	4762250.00200869	611749.99948347