

Mountain Birdwatch 2.0

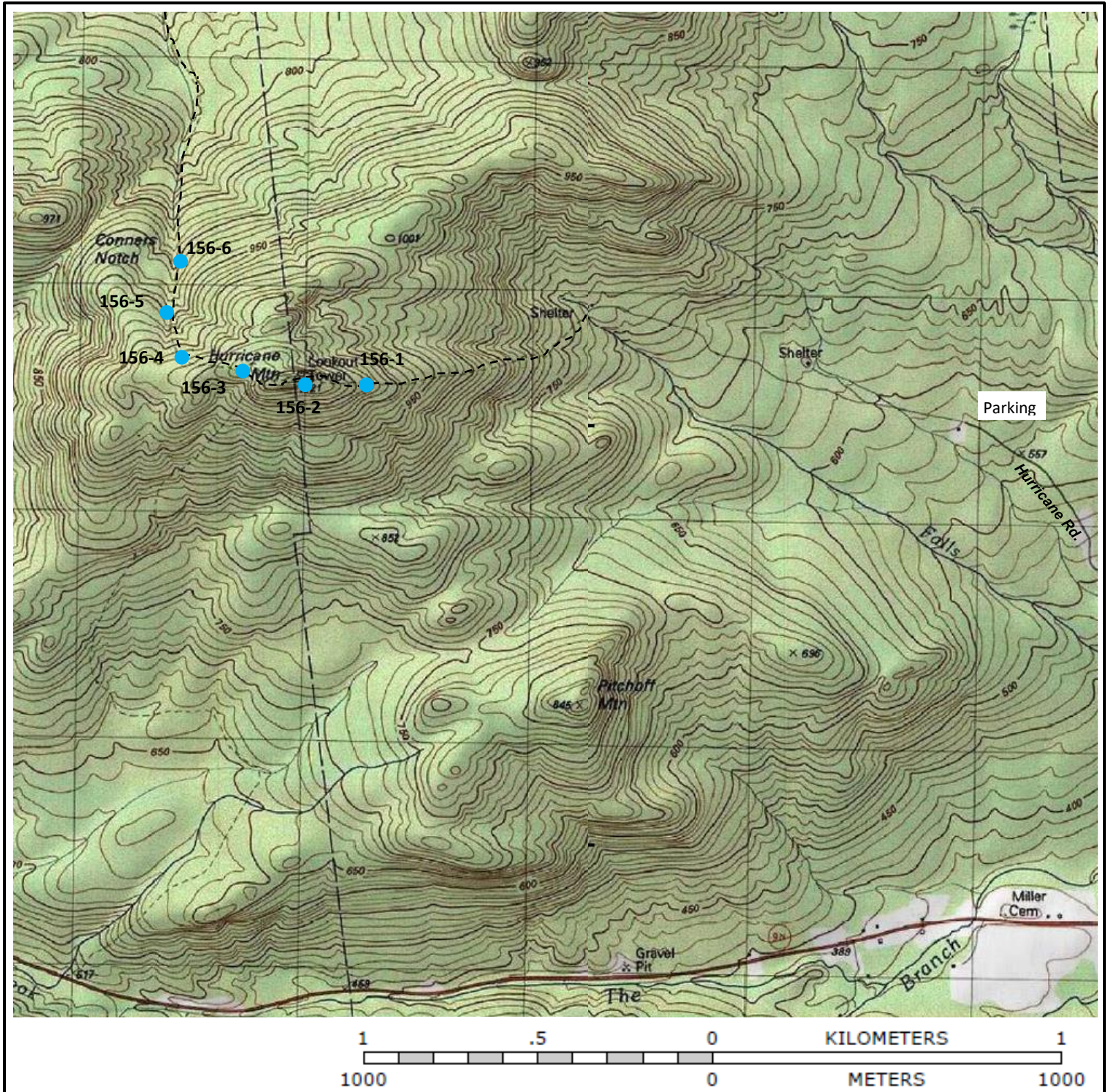
Route 156: Hurricane, NY







Hike Duration/Difficulty: 2.2 miles, easy to moderate; 1.5 hours.

Revised 4/2017

Route/Trail Access: From Keene Valley take Rt. 73 north 3 miles to 9N, turn right and go east ~8 miles, then turn left onto Hurricane Road (on N side of 9N). Follow ~3 miles to parking spot. Hike past private residences on old road and continue about 1.5 mile to trail at stream crossing. From here it is ~0.5 mile climb to **Point 1**, located ~200m below treeline; **Point 2** is 50m above treeline & 20m from firetower; **Points 3-6** are on N side of mountain on trail with blue DEC trail markers toward Crow Crossing (coming from summit, take a right at trail intersection).

156 Hurricane



Pt #	Picture 1	GPS ¹	Description
1	 Facing E from pt 1.	N 44.23524 W 73.70673 Elev (m) 1044	Point is on a rounded, oval rock 0.5 m long. 1 m SW is 1 m high (1.5m x 2m) boulder with moss with small balsam growing from it. Cut log 2 m long parallel to trail 2 m S ends on this boulder. MBW tag is on the back of a paper birch 15 cm dbh (diameter at breast height) 2.5 m S of point. 1 m high broken stump 15 cm diameter is 1.5 m N with log splintered N of it. Mountain Ash 10 cm dbh is 4 m SSW.
2	 Facing N from pt 2.	N 44.23521 W 73.70988 Elev (m) 1097	Trail at point is not defined because it's on open bedrock at the top of the mountain with no markers; it drops sharply 1 m at a spot 1 m SW of point. Small 20 cm high rock cairn is at the point, but might not last. Base of firetower is 10 m NW of point. 5 m NE is a 2.5 m high, sharp rise in bedrock. MBW tag is on 3 cm dbh balsam 3 m high, and 5m NE of point. Nearest red Trail Marker is on tree at edge of treeline 30 m E, facing W toward point.
3	 Facing E from pt 3.	N 44.23584 W 73.71284 Elev (m) 1086	Point is at E end of 8 m long log (diameter here is 20 cm) running SE to NW 0.5 m above ground on N side of trail. Just behind (N of) log end is 28 cm dbh paper birch with MBW tag on back. 3 m SW of trail edge at point is 10 m diameter clearing filled with ferns. Point is 75 m NW (downhill) walk on blue trail towards Gulf Brook Lean-to from junction with red trail to Rt 9N.
4	 Facing N from pt 4.	N 44.23774 W 73.71455 Elev (m) 1014	1 m E of point is 7 cm dbh balsam fir with a 1 m tall sapling/sucker growing from its base on N side; MBW tag is on back (E side). 8 m S trail splits for 3 m around "island" in center of trail. Trail to W of islands (0.75m) is wider than trail to E (0.5 m). Trail is relatively rock-free at point and S to 1 m past "island" where it becomes full of small boulders and cobble again. 5 m S on E side of trail is 17 cm dbh paper birch with blue trail markers on N and S sides. 4 m N trail goes over 1.5 m x 1.5 m exposed boulder, creating 0.5 m high step in trail (steps down to N).
5	 Facing N from pt 5.	N 44.23995 W 73.71516 Elev (m) 955	2.5 m N a 3-m long, 15 cm diameter paper birch (very little bark left) lies parallel to trail forming its W edge. 1.5 m N on W side of trail is 15 cm dbh paper birch (MBW tag on back). 0.5 m S of this birch is 7 cm dbh balsam snag, 2 m tall. Immediately SE of MBW birch is half of a very decayed 0.25 m tall stump. 3.5 m SE on E side of trail is 38 cm dbh paper birch. Just to E of this (38cm) birch on downslope side (facing point) is the exposed underhang of large boulder (which is mostly covered with soil). 8 m S on W edge of trail is 1.25 m tall, very cubical boulder (1.5 m x 1.5 m).
6	 Facing N from pt 6.	N 44.24185 W 73.71349 Elev (m) 911	Paper birch 15 cm dbh is 0.5 m N of point in middle of trail with flat boulder 1 m x 2 m next to (E of) it as trail terrain. Paper birch 20 cm dbh is 1.5 m N of point, W of trail. MBW tag is 3 m W on maple 10 cm dbh with 8 cm dbh, 2m tall snag next to (N of) it with peeling paper birch bark on it, leaning N. Striped maple 15 cm dbh is 3 m N of point. 2 crossed logs are 5 m NW of point over mossy rock 1 m high.

¹ Please note that waypoint locations are provided in decimal degrees.

*Please survey this route in order, beginning with point 1.

Visit www.flickr.com and search People for "Mountain Birdwatch" to view additional pictures of your route online.