

DIRECTIONS TO FBMP SITE AT

Bramhall Wilderness Preserve

Bridgewater, VT

Site established by Steve Faccio and Nathaniel Sharp, 6 May 2021.

Bramhall Wilderness Preserve is accessed from the junction of Chateaugay Rd. and Bridgewater Hollow Rd., 4.8 miles north of Route 4.

From Route 4, just west of RT 100A, take Bridgewater Center Rd. north (across from Long Trail Brewery). After passing through the tiny village of Bridgewater Center, the road changes to Chateaugay Rd. When the road turns to dirt go 1.7 miles to Bridgewater Hollow Rd. and park in the large pullout at the junction. Walk back down Chateaugay Rd ~200m and head left up the old woods road just before the bridge. Alternately, you can park here; just don't block the entrance to the woods road.

Follow the woods road up along the southern boundary of the preserve. It will climb steeply for ~200m, and then level out as you pass through an old field. At the upper edge of the old field, at the SE corner of the preserve boundary (pink flagging marked this location when the site was established) head north into the forest, crossing two streams. Continue heading N about 250 m to Point 1.

NOTE: All points are flagged in blue and marked with aluminum treetags (BP1, BP2, BP3, BP4, BP5).

POINT 1 – Located on a **4” dbh Sugar Maple** about 10m W of a large (6-foot tall), prominent, rock cairn on a flat bench.

POINT 2 – To reach Point 2, head W for ~200m. Shortly after crossing a small stream and climbing up a short slope, the point is located in a flat area on a **3” dbh American Beech**.

POINT 3 – To reach Point 3, continue heading W for 230m down a slight w-facing slope. The point is located on a **4” Sugar Maple** in a slightly less mature stand with scattered Red Spruce in the understory.

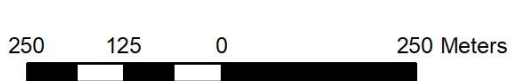
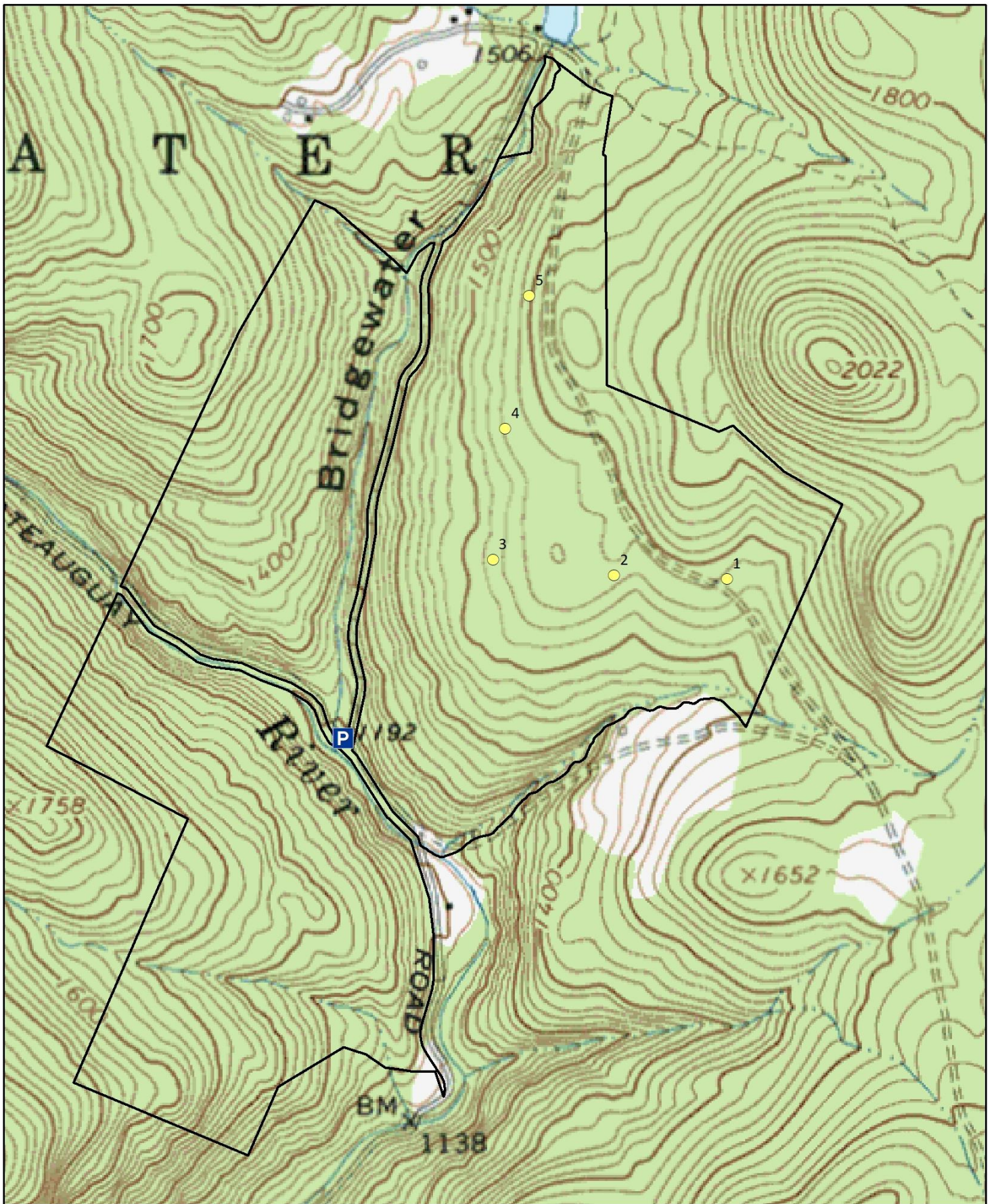
POINT 4 – To reach Point 4, head N for 250m to a **5” dbh Sugar Maple** on a W-facing slope ~30m W of several mature White Birch.

POINT 5 – Continue N for 250m to the last station on a **5” dbh Sugar Maple** about 30m beyond a large rocky outcropping and 30m downslope from a huge (5’ dbh), super-canopy White Pine.

To reach your vehicle, head downslope to Bridgewater Hollow Rd.

Point Count Coordinates

Point Count	LAT	LONG
1	43.648650	-72.648500
2	43.648708	-72.651161
3	43.648966	-72.654015
4	43.651211	-72.653734
5	43.653491	-72.653175



Forest Bird Monitoring Program -- Bramhall Wilderness Preserve

● Point Counts