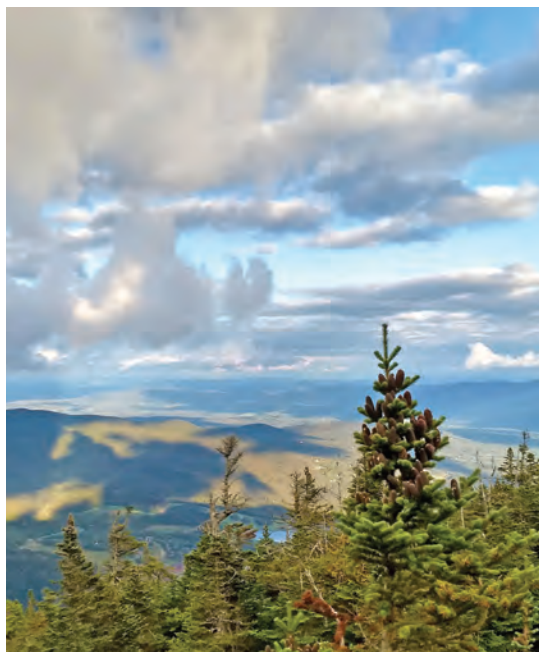


# Connecting Policymakers with Scientists

The Science to Policy Working Group, a new partnership including VCE and policy-focused organizations in Vermont, held its first Science to Policy Forum for legislators. The Forum clarified the scientific dimensions of key policy issues and opened new channels for ongoing consultation.

While VCE is not an advocacy organization, we are committed to ensuring decision-makers understand our work and serving as a scientific resource for legislators. Over three webinars, scientific experts from across Vermont discussed climate change and landscape resilience, forest health and biodiversity, and water quality. By sharing our work with policymakers, we inform ecologically sound policies, connect legislators with our knowledgeable team of biologists, and build collaborations with other policy-minded colleagues across the state.



© KENT MCFARLAND

## A Sampling of VCE's Community Science Opportunities



© MIKE ZIMMERMANN

### Mountain Birdwatch

Each June, volunteers hit the trails to complete bird survey routes on 123 mountain ridgelines across the Northeast.



© SEAN MCCREADY

### Loon Conservation

Whether you live alongside a lake or only occasionally visit your favorite pond, VCE offers several options for interested loon volunteers.



© KENT MCFARLAND

### Vernal Pool Monitoring

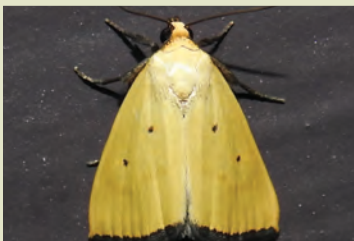
In April, May, and September, volunteers visit and collect data to monitor "adopted" vernal pools following protocols and using VCE-provided equipment.



© KENT MCFARLAND

### Whip-poor-will Project

On moonlit nights in early summer, volunteers set out on 17 roadside survey routes to listen for Eastern Whip-poor-wills and record conditions.



© JOANNE RUSSO

### Moth Blitz

During National Moth Week in July, volunteers leave the porch light on—or use special lights and baits—and help map moth species distribution in Vermont.



© BRYAN PEIFFER

### Forest Bird Monitoring

Each June, volunteers monitor breeding birds on 31 sites across Vermont in one of the continent's longest-running studies of forest bird population trends.



© SUSAN ELLIOTT

### Lady Beetle Atlas

In early June and August, volunteers keep an eye out for the state's 36 native species, including the four "most wanted": Nine-spotted, Two-spotted, Transverse, and Thirteen-spotted.



### Cocoon Watch

During the month of November, volunteers find and photograph cocoons hanging in bushes and trees. They return in the spring to document what emerges.