

DIRECTIONS FOR FBMP SITE AT:

DORSET BAT CAVE PRESERVE

EAST DORSET, VT

To reach the Dorset Bat Cave (a Nature Conservancy Preserve of 150 acres), take Route 7 south from East Dorset, bear right onto Rt. 7A and in 0.1 mile, turn right onto Morse Hill Rd. After about 1 mile, turn sharply right (north) on a dirt road (Dorset Hill Road). You will pass a small cemetery on your right in just over a mile, then another cemetery ½ mile further on. About ¼ mile after this, you will come to a fairly prominent jeep trail on the left, just beyond a house also on the left. There are two signs at the trailhead, one of them stating that the road is a public highway, the other informing you not to park here.

Proceed up this logging/jeep road, and take the first left fork after 150-200 meters. Park here. Hike up the road for about ½ mile to a large pullout on the left. From here, go uphill on a bearing of 330 to reach **station #1** on a **14” dbh maple**, marked with blue flagging and a treetag inscribed with “VINS DB #1”.

POINT 2 – Follow a bearing of 200 to a **10” dbh sugar maple** flagged with blue tape and a metal tree tag reading “VINS DB #2.”

POINT 3 – Head downhill to the jeep road and follow it in a southerly direction. Watch for a fallen white birch on the left side and parallel to the road, and a triple-flagged yellow birch just beyond. **Point 3**, a **4” maple**, is about 10 m uphill from here.

POINT 4 – Drop down to the jeep road again and follow it past a marble corner marker on your left to an intersection. Take the left fork a short distance to the powerline. Drop along the powerline to the first dropoff (by pole 8/8). From here, take a bearing of **225** along a grown-over logging rd. and look for flagging on the left. From here, follow a bearing of **120** which drops you down to point 4 on a **6” hophornbeam**.

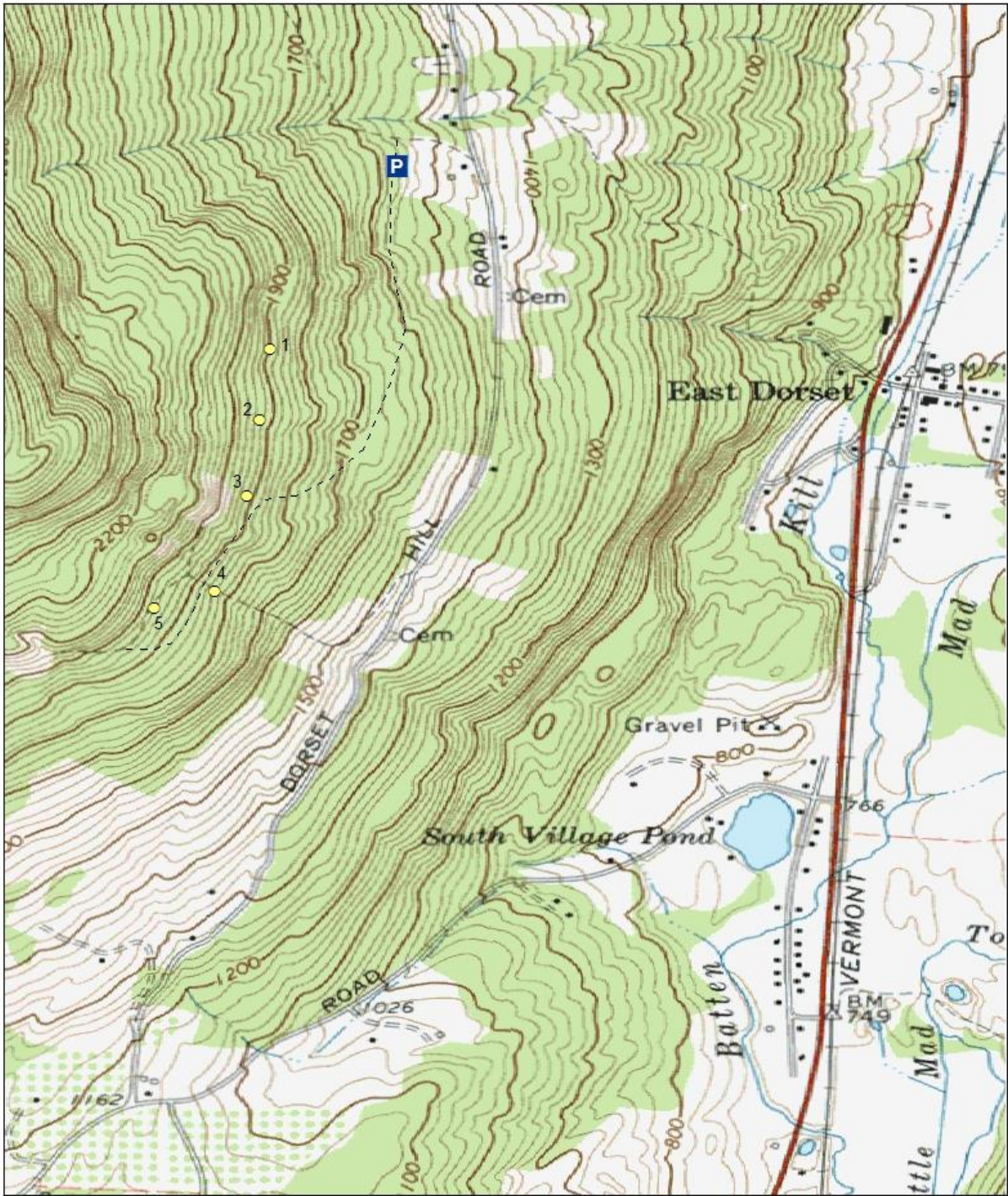
POINT 5 – Return to the logging trail and continue along it for about 75 m. Then follow a bearing of 290 uphill for ~ 50 m to point #5 on an **8” dbh white birch**.

You can easily return to your vehicle by descending the logging road just upslope from station #5.

Point Count Coordinates (Decimal Degrees)

Point Count	LAT	LONG
1	43.24086249	-73.02627870
2	43.23897958	-73.02656301
3	43.23695183	-73.02689561
4	43.23442519	-73.02774318
5	43.23399603	-73.02935251

*NOTE: Surrounding each point count station are three vegetation plots, each located 30 m away on **magnetic** bearings of 0°, 120°, and 240°. They are labeled with treetags inscribed with the point count number and a letter corresponding to the bearing: B (0°), C (120°), and D (240°). Be careful not to confuse these points with the actual point count stations.*



Forest Bird Monitoring Program - Dorset Bat Cave

● Point Counts