

DIRECTIONS FOR FBMP SITE AT:
SUGAR HOLLOW PRESERVE

PITTSFORD, VT

NOTE: Bearings are True North (Magnetic North +15°)

Updated 1 November 2016

To reach Sugar Hollow Preserve, take Rt. 7 north from Pittsford village about ¼ mile and turn right (east) onto Plains St. 0.3 miles before R-J's Eatery and the New England Maple Museum. Continue for about 1 mile and bear left onto Sugar Hollow Rd. Take this road for about 2.5 miles watching for a barely noticeable grassy pull-off on the right (east) side of the road, at the top of a small rise. There is a wooden *Nature Conservancy* sign in the small clearing there. Park in the grassy clearing.

From this sign (or the small grassy opening where the sign should be), walk east through young forest about 50m, then climb the short, steep slope. At the top of this rise, head north through white pine stand about 50m. As you transition out of the white pine stand look carefully for the first marker -- blue flagging on a tree reading "VINS SH START."

From here take a compass bearing of **70°** and follow the blue flagging every 50 meters or so for 200 m. Just before reaching the point, you will climb a short, steep rocky section and come to an old logging road. **Point 1**, on a **16" dbh sugar maple**, is visible from the logging rd. about 10 m uphill and is marked with blue flagging and a metal tree tag inscribed with "VCE SH #1."

Point 2 -- From here take a bearing of 20° and follow it 200 m to station #2 on a **16" white ash**, marked with flagging and a treetag "VCE SH #2."

Point 3 – From here, the line shifts to a compass bearing of **35°** for 200 m to point 3 on a **12" black birch** near the base of a rocky outcropping.

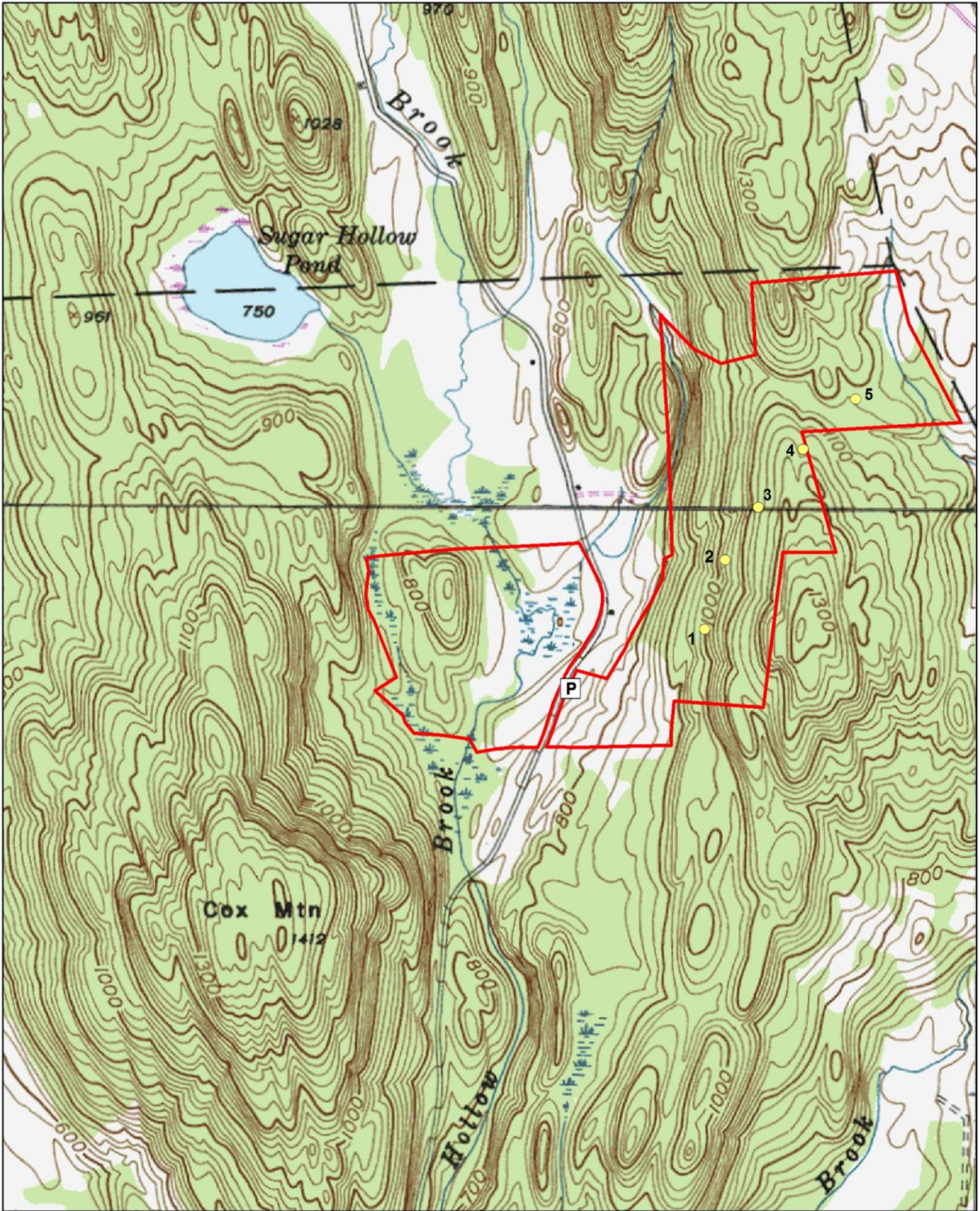
Point 4 – Continue 200m on a bearing of **35°** into an open forest with several blowdowns. Point 4 is on a **6" white ash** about 20m upslope from a network of sugaring tube lines. The sugaring lines end at the TNC boundary line, which is flagged in orange along an old barbed wire fence line with occasional TNC signs.

Point 5 – To reach the last station, take a final bearing of **45°** and follow it 200 m to a **10" sugar maple**, on top of a small rise, just after crossing 2 small streams.

NOTE: Three veg plots surround each point count station, each located 30 m away on magnetic bearings of 0°, 120° and 240°. Their treetags are labeled with VINS SH VEG # X B (0°), C (120°), and D (240°). Be careful not to confuse these points with the actual point count stations.

Point Count Coordinates (Decimal Degrees)

Point Count	Lat	Long
1	43.74675	-73.01008
2	43.74851	-73.00934
3	43.75022	-73.00778
4	43.75171	-73.00655
5	43.75326	-73.00441



0 500 1,000 Meters

Forest Bird Monitoring Program -- Sugar Hollow Preserve

- Point Count
- ▭ Sugar_Hollow_TNC Property Line