

# Blue Vervain

(*Verbena hastata*)

## Plant Spacing

12"-18"

## Moisture

Moist to average

## Soil Type

Loam

## Light

Full sun / part shade

### Additional care notes:

Can be planted in rain gardens, pond edges, or wet meadows.  
Not drought tolerant.

## Flowering Time

June - September

## Peak Flowering

July

## Flower Type

Spike

When asked to count flowers on your data sheet, you will count "spikes".

On spikes, the flowers are connected directly to a main stalk.



## Initial Growth



## Flower Buds



## Flowering



## Seed



## Wildlife Benefits

### Host plant for:



Verbena moth  
(*Crambodes  
talidiformis*)  
caterpillar



Common Buckeye  
(*Junonia coenia*)  
caterpillar

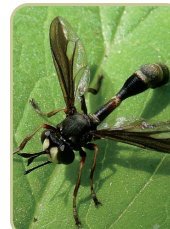
### Attracts:



Bees and wasps



Butterflies



Flies



Seed eating  
Songbirds

# Planting Guidelines and Surveys

Throughout this experiment, you'll be collecting data about the plants you've received and the pollinators that interact with them. But first, we'd like to understand the location where you're hosting your plants.

1. Follow the planting guidelines below to get your plants in the ground.
2. Once your plants are in the ground, fill out the 'Planting Conditions' survey in Survey123
3. Submit weekly plant and pollinator data using the 'Timed Count' survey in Survey123

## Planting Guidelines

### Weeding:

- **Before planting:** Remove weeds in a 4 inch diameter around where the plant will go.
- **After planting:** Weed as necessary to maintain room for the plant to grow.

### Planting:

1. Dig a hole 2-3 times the width and just slightly deeper than your plant's roots.
2. If your plant is root-bound (i.e. the roots have formed a dense, tangled mass), loosen or tear some of the roots to allow them to grow out into the soil.
3. Place the plant in the hole and backfill with the existing soil - do not add special soils or fertilizers.
4. Press the soil gently around the plant to "put it to bed".
5. Plants should be spaced 12-18 inches away from each other.

### Watering:

1. Water your new plant immediately after planting in the ground.
2. Water around the base of the plant, not from above, until the soil is moist but not soggy.
3. **First 6 weeks:** Water your plants if there is no rain for 3 days.
4. **After 6 weeks:** Your plants should not require watering unless there is a long period (2+ weeks) of no rain.