

Gray Goldenrod

(*Solidago nemoralis*)

Plant Spacing

12"-24"

Moisture

Dry

Soil Type

Slightly acidic to dry

Light

Full sun

Additional care notes: Can grow in rocky, clay slopes with little organic matter and can reach a height of up to 2 feet.

Host plant for over 100 moth and butterfly species and more than 10 specialist bees in the Northeast!

Flowering Time

August - October

Peak Flowering

August

Flower Type

Panicle



When asked to count flowers on your data sheet, you will count plumes of flowers, also called "panicles".

- Panicles contain a cluster of branches with each branch containing several flowers.
- Each cluster circled in the picture (right) should be counted as 1 flower.



Initial Growth



Flower Buds



Flowering



Seed



Wildlife Benefits

Supports Specialist Bees:



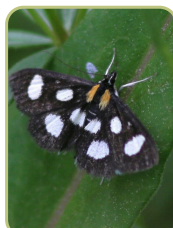
Hairy Banded
Miner Bee
(*Andrena
hirticincta*)



Cloudy-winged
Miner Bee
(*Andrena
nubecula*)



Brown-hooded
Owllet Moth (*Cucullia
convexipennis*)
caterpillar



White-spotted
Sable Moth
(*Anania funebris*)
caterpillar

Supports:



Bees and wasps



Butterflies and
moths



Beetles, flies, and
other insects

Planting Guidelines and Surveys

Throughout this experiment, you'll be collecting data about the plants you've received and the pollinators that interact with them. But first, we'd like to understand the location where you're hosting your plants.

1. Follow the planting guidelines below to get your plants in the ground.
2. Once your plants are in the ground, fill out the 'Planting Conditions' survey in Survey123
3. Submit weekly plant and pollinator data using the 'Timed Count' survey in Survey123

Planting Guidelines

Weeding:

- **Before planting:** Remove weeds in a 4 inch diameter around where the plant will go.
- **After planting:** Weed as necessary to maintain room for the plant to grow.

Planting:

1. Dig a hole 2-3 times the width and just slightly deeper than your plant's roots.
2. If your plant is root-bound (i.e. the roots have formed a dense, tangled mass), loosen or tear some of the roots to allow them to grow out into the soil.
3. Place the plant in the hole and backfill with the existing soil - do not add special soils or fertilizers.
4. Press the soil gently around the plant to "put it to bed".
5. Plants should be spaced 12-18 inches away from each other.

Watering:

1. Water your new plant immediately after planting in the ground.
2. Water around the base of the plant, not from above, until the soil is moist but not soggy.
3. **First 6 weeks:** Water your plants if there is no rain for 3 days.
4. **After 6 weeks:** Your plants should not require watering unless there is a long period (2+ weeks) of no rain.