

Wild Bergamont

(*Monarda fistulosa*)

Plant Spacing

12"-18"

Moisture

Average

Soil Type

Average

Light

Full sun / part shade

Additional care notes: Does well in well drained soils. Prone to Powdery mildew. Encouraging air flow around plants can help.

Flowering Time

July - September

Peak Flowering

July

Flower Type

Clusters

When asked to count flowers on your data sheet, you will count "clusters".

The clusters present as individual heads made up of many thin tubular flowers on stalks.



Initial Growth



Flower Buds



Flowering

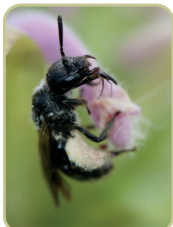


Seed



Wildlife Benefits

Supports
Specialist Bees:

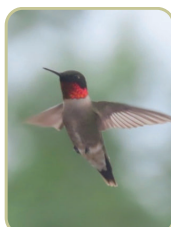


Beebalm Shortface
Bee
(*Dufourea monardae*)

Supports:



Hummingbird
Moths



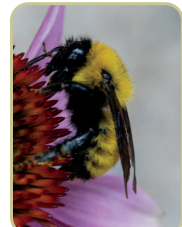
Hummingbirds



Butterflies



Flies



Bumble Bees like:
Golden Northern
Bumble Bee
(*Bombus fervidus*)

Planting Guidelines and Surveys

Throughout this experiment, you'll be collecting data about the plants you've received and the pollinators that interact with them. But first, we'd like to understand the location where you're hosting your plants.

1. Follow the planting guidelines below to get your plants in the ground.
2. Once your plants are in the ground, fill out the 'Planting Conditions' survey in Survey123
3. Submit weekly plant and pollinator data using the 'Timed Count' survey in Survey123

Planting Guidelines

Weeding:

- **Before planting:** Remove weeds in a 4 inch diameter around where the plant will go.
- **After planting:** Weed as necessary to maintain room for the plant to grow.

Planting:

1. Dig a hole 2-3 times the width and just slightly deeper than your plant's roots.
2. If your plant is root-bound (i.e. the roots have formed a dense, tangled mass), loosen or tear some of the roots to allow them to grow out into the soil.
3. Place the plant in the hole and backfill with the existing soil - do not add special soils or fertilizers.
4. Press the soil gently around the plant to "put it to bed".
5. Plants should be spaced 12-18 inches away from each other.

Watering:

1. Water your new plant immediately after planting in the ground.
2. Water around the base of the plant, not from above, until the soil is moist but not soggy.
3. **First 6 weeks:** Water your plants if there is no rain for 3 days.
4. **After 6 weeks:** Your plants should not require watering unless there is a long period (2+ weeks) of no rain.