

Wild Strawberry

(*Fragaria virginiana*)

Plant Spacing

12"-24"

Moisture

Dry to average

Soil Type

Sandy, loam

Light

Full sun / part shade

Additional care notes: Tolerant of a variety of soils. Low growing, spread by rhizomes, makes a great ground cover or alternative lawn

Flowering Time

April - June*

Peak Flowering

May

Flower Type

Individual Flowers

*Strawberry can flower sporadically through-out the growing season season

When asked to count flowers on your data sheet, you will count the individual 5 petaled, white flowers.



Initial Growth



Flower Buds



Flowering

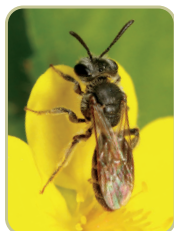


Seed



Wildlife Benefits

Supports specialist bees:



Rose Miner Bee
(*Andrena melanochroa*)

Host plant for:



Hitched Arches Moth
(*Melanchra adjuncta*)
caterpillar



Crocus Geometer
Moth (*Xanthotype sospeta*)
caterpillar



The Slowpoke Moth
(*Athetis tarda*)
caterpillar

Attracts:



Wildlife



Bees and other
insects

Planting Guidelines and Surveys

Throughout this experiment, you'll be collecting data about the plants you've received and the pollinators that interact with them. But first, we'd like to understand the location where you're hosting your plants.

1. Follow the planting guidelines below to get your plants in the ground.
2. Once your plants are in the ground, fill out the 'Planting Conditions' survey in Survey123
3. Submit weekly plant and pollinator data using the 'Timed Count' survey in Survey123

Planting Guidelines

Weeding:

- **Before planting:** Remove weeds in a 4 inch diameter around where the plant will go.
- **After planting:** Weed as necessary to maintain room for the plant to grow.

Planting:

1. Dig a hole 2-3 times the width and just slightly deeper than your plant's roots.
2. If your plant is root-bound (i.e. the roots have formed a dense, tangled mass), loosen or tear some of the roots to allow them to grow out into the soil.
3. Place the plant in the hole and backfill with the existing soil - do not add special soils or fertilizers.
4. Press the soil gently around the plant to "put it to bed".
5. Plants should be spaced 12-18 inches away from each other.

Watering:

1. Water your new plant immediately after planting in the ground.
2. Water around the base of the plant, not from above, until the soil is moist but not soggy.
3. **First 6 weeks:** Water your plants if there is no rain for 3 days.
4. **After 6 weeks:** Your plants should not require watering unless there is a long period (2+ weeks) of no rain.